

PLATEC

Your Foodservice Solution



CE UL RoHS CB

Professional Kitchen Equipment
Food Processing Equipment
Refrigeration Equipment
Bakery Equipment
Vending Machine
Hotel Equipment

PLATEC

Add: No.9, Donghuan Street, Panyu District, Guangzhou, China
Tel: +86-512-65329708
Fax: +86-512-65566291
Contact: Hill Shen
E-mail: hill.shen@platecgroup.com
hill@cmecfm.com
www.cmecfm.com

www.cmecfm.com

Company Brief

PTC Hotel Equipment Co., Ltd.

PTC Hotel Equipment Co.,Ltd. (former: CMEC Food Machinery Co., Ltd.), now is a subordinate company of Platec Group Corp.(PTC GROUP). Since 1987, we have been cooperating with CMEC, and successfully established business relationships in more than 70 countries in the world.

PTC Hotel Equipment Co.,Ltd. specializes in hotel and restaurant equipment and service. With long time experience in this industry, we are now able to provide the following:professional kitchen equipments, food processing equipment,bakery equipment,refrigeration equipment,coffee machines,and all kinds of vending machines.

PTC Hotel Equipment Co.,Ltd. has a good team to supply you good products and service.



Notice

Gas products

- ▶ All gas products are set for 2800pa liquified petroleum gas(L.P.G)
- ▶ Some products can be customized to natural gas or pipeline gas.
- ▶ All gas products must use the low-pressure valve.

Electric products

- ▶ The frequency of all electric products are 50HZ.
- ▶ Most of 50HZ can be available at 60HZ.
- ▶ General voltage is:220V/380V,some products can be customized into 110V and 60HZ.

- 01 Food Mixer/Dough Mixer
- 03 Noodle Presser/Vegetable Cutter
- 06 Immersion Blender/Commercial Kebab Slicer/Potato Peeler
- 08 Meat Grinder/Grain Grinder/Bone Saw
- 10 Meat Slicer/Dough Divider&Rounder/Dough Sheeter
- 12 Orange Juicer/Sugarcane Juicer/Commercial Blender/Milk Mixer
- 14 Food&Vegetable Cutter Series
- 15 Electric Fryer
- 17 Gas Fryer/Pressure Fryer
- 19 Electric Combination Cooking Line/Gas Combination Cooking Line
- 21 Lava Rock Grill/Gas Grill/Electric Grill
- 24 Electric Bain Marie/Food Warmer Cart
- 25 Warming Showcase/Popcorn Machine/Food Dehydrator
- 27 Gas Stove/Kebab Machine/Food Steamer
- 29 Cotton Candy Machine/Chocolate Fountain/Stainless Steel Juice Dispenser
- 31 Hot Dog Grill/Waffle Baker&Cone Baker/Crepe Maker
- 33 Contact Grill/Bread Toaster/Waffle Baker/Cup Sealing Machine
- 35 Rotary Rotisseries/Salamander/Conveyor Pizza Oven
- 37 Gas Conveyor Pizza Oven/Electric Pizza Oven/Dount Machine
- 39 Luxury Combi-Stamer/Electric Oven
- 41 Gas Oven/Baking Oven/Baking Oven with Proofer
- 43 Spray Proofer/Rotary Convection Oven
- 45 Convection Oven
- 48 Ice Cream Showcase
- 49 Vertical Stainless Steel Freezer/Freezing Working Bench
- 51 Cake Showcase/Beverage Display Showcase
- 53 Slush Dispenser/Juice Dispenser
- 55 Ice Maker/Ice Chip Machine/Ice Crusher
- 57 Soft Ice Cream Machine/Hard Ice Cream Machine
- 59 Work Bench Series/Wire Shelving
- 61 S.S Working Table
- 63 Luxury Stainless Steel Cart/Luxury Soup Kettle/S.S GN PAN
- 65 S.S GN POT/Stainless Steel Cart/Luxury Chafing Dish

B Series Food Mixer

B series food mixers work in high performance. The agitator is designed to do planetary motion inside the bowl where the food can be fully blent. The machines are complete with 3 types of agitator and have 3 grades of speed for different mixing purposes like flour mixing,stuff mixing,egg beating and etc...All parts in contact with food are made of stainless steel or steel with specially treated surfaces,which are enduring in use and in conformity with national food hygiene standard.



Model	Voltage	Power	Speed(r/min)	Capacity	Max.Kneading Capacity(kg)	Package	Net Weight
B10	110V/220V	0.37Kw	110/200/420	10L	3	wooden case	55kg
B20	110V/220V/380V	0.75Kw	110/200/420	20L	3	wooden case	80kg
B30	110V/220V/380V	0.95Kw	110/200/420	30L	3.5	wooden case	90kg
B40	110V/220V/380V	1.5Kw	80/160/310	40L	4.5	wooden case	150kg
B50	3~380V	1.8Kw	74/150/288	50L	7	wooden case	195kg
B60	3~380V	2Kw	74/150/288	60L	8	wooden case	230kg
B80	3~380V	4Kw	75/111/147/220	80L	30	wooden case	480kg
B100	3~380V	4Kw	75/111/147/220	100L	40	wooden case	580kg

T Series Food Mixer



Model	T-5	T-7	T-5L	T-7L
Material(Body)	Stainless Steel	Stainless Steel	Stainless Steel	Stainless Steel
Voltage	110V/220V/230V	110V/220V/230V	110V/220V/230V	110V/220V/230V
Frequency	50/60HZ	50/60HZ	50/60HZ	50/60HZ
Power	300W	350W	300W	350W
Speed(r/min)	83-570	80-600	131-852	131-852
Capacity	5L	7L	5L	7L
Size(mm)	370 x 230 x 410	410 x 250 x 425	370 x 230 x 410	480 x 300 x 500
Net Weight	25kg	30kg	25kg	30kg

BM Series Food Mixer



BM10/20/30/40

- The overall surface of the machine is painted with automobile paint.
- The gearbox is designed with gearbox module to facilitate maintenance.
- The machine provides three agitators, with three speeds to achieve good results.
- Full power, high efficiency, copper wire motor
- Within current overload protection, safe and efficient.
- The stirring speed is faster than that of the general machine and the working efficiency is high.

Model	BM10	BM20	BM30	BM40
Material(Body)	ss	ss	ss	ss
Voltage	110V/220V/230V	110V/220V/230V	110V/220V/230V	110V/220V/230V
Frequency	50/60HZ	50/60HZ	50/60HZ	50/60HZ
Power	600W	1100W	1300W	1300W
Speed(r/min)	118/234/460	118/234/460	125/204/430	125/204/430
Capacity	10L	20L	30L	40L
Size(mm)	490 x 420 x 820	650 x 480 x 950	720 x 610 x 1120	740 x 640 x 1170
Net Weight	61kg	85kg	160kg	165kg

HS Series Spiral Mixer

Electronic variable speed, double-action double-speed, control by button



HS10 (steel cover)

HS20/30/40 (steel cover)

HS50/60/80 (steel cover)

HS100/130/200/260 (steel cover)

Model	Voltage	Power	Speed(r/min)	Bowl	Max Kneading	Dimension	Net Weight
HS10	110/220V	0.75Kw	170	10L	4kg	550x340x530mm	48kg
HS20	110/220/380V	1.5Kw	112/198	20L	8kg	730x390x900mm	90kg
HS30	110/220/380V	1.5Kw	112/198	30L	12.5kg	750x435x900mm	100kg
HS40	110/220/380V	1.5Kw	112/198	40L	16kg	840x480x1000mm	155kg
HS50	110/220/380V	3Kw	112/198	50L	20kg	840x480x1000mm	170kg
HS60	110/220/380V	3Kw	112/198	60L	25kg	840x480x1000mm	180kg
HS80	3~380V	3Kw	100/200	80L	32kg	1000x560x1380mm	300kg
HS100	3~380V	5Kw	100/200	100L	40kg	1080x650x1380mm	340kg
HS130	3~380V	6Kw	100/200	130L	50kg	1160x730x1380mm	370kg
HS200	3~380V	8.6Kw	100/200	200L	75kg	1380x840x1560mm	410kg
HS260	3~380V	9Kw	100/200	260L	100kg	1380x840x1560mm	450kg

CS Series Spiral Mixer



CS10 (Single speed)

CS20/30/40/50 (Single speed)

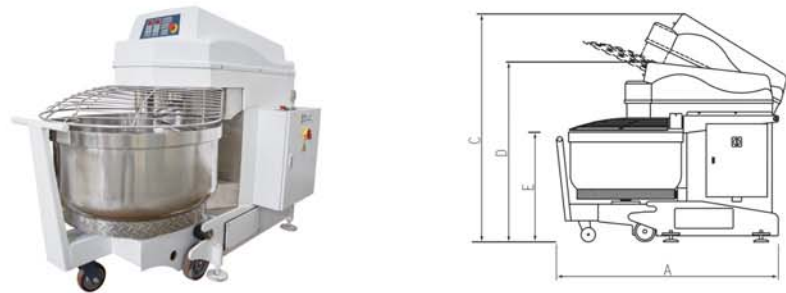
CS30A/40A/50A (Double speed)

CS80A/100A/130A/200A (Double speed)

Model	Voltage	Power	Speed(r/min)	Bowl	Max Kneading	Dimension	Net Weight
CS10	220V	0.8Kw	185	10L	5kg	680x360x750mm	68kg
CS20	220V	1.1Kw	185	21L	8kg	690x380x730mm	70kg
CS30	220V	1.6Kw	185	35L	12kg	730x430x770mm	90kg
CS40	220V	2.9Kw	185	40L	16kg	870x480x935mm	127kg
CS50	220V	2.9Kw	185	50L	20kg	920x530x935mm	130kg
CS30A	3~380V	1.1Kw	101/202	35L	12kg	730x430x770mm	95kg
CS40A	3~380V	3.3Kw	101/202	40L	16kg	870x480x935mm	127kg
CS50A	3~380V	3.3Kw	101/202	50L	20kg	920x530x935mm	130kg
CS80A	3~380V	3.9Kw	101/202	80L	25kg	1122x650x1305mm	429kg
CS100A	3~380V	6.3Kw	101/202	100L	40kg	1160x650x1340mm	470kg
CS130A	3~380V	7.4Kw	101/202	130L	50kg	1222x750x1430mm	507kg
CS200A	3~380V	10Kw	101/202	200L	70kg	1332x950x1510mm	675kg

Separation Spiral Mixer

Mixing short period of time. Suit for production line. Digital control panel, can managed all processing once before it start. Mixers head have protection while up and down. No accident allow. Bowl pushing out when the head lifting up the height. Professional hydraulic system. Bowl trolley do not loss out while mixing time. Stainless steel protection cover, suit for food manufacture safety.



Model	Voltage	Power	Speed(r/min)	Dough	Flour	Dimension	Net Weight
SE-75	380V/50Hz	9Kw	130/260	120kg	75kg	1820×1080×1880mm	1000kg
SE-100	380V/50Hz	10.5Kw	130/260	160kg	100kg	1820×1080×1880mm	1150kg
SE-125	380V/50Hz	13.5Kw	130/260	200kg	125kg	1820×1200×1880mm	1300kg

Noodle Presser



MAG-25/30/35 MAG-60/70 MAGS-300/400 MAG110-25/30 MAG125-25/30 MAG130-25/30

Model	Voltage	Power	Speed(r/min)	Length(Dough)	Diameter(Dough)	Dimension	Net Weight
MAG-25	220V	1.5Kw	69	190mm	87mm	390×330×860mm	69kg
MAG-30	220V	2.2Kw	69	240mm	87mm	440×330×860mm	74kg
MAG-35	220V	2.2Kw	69	290mm	87mm	490×330×860mm	79kg
MAG-60	220V	2.2Kw	69	240mm	87mm	440×380×960mm	80kg
MAG-70	220V	2.2Kw	69	290mm	87mm	490×380×960mm	85kg
MAGS-300	220V	2.2Kw	69	290mm	87mm	480×290×800mm	68kg
MAGS-400	220V	2.2Kw	69	340mm	87mm	530×290×800mm	88kg
MAG110-25	220V	2.2Kw	130	250mm	112mm	560×690×1050mm	100kg
MAG110-30	220V	2.2Kw	130	300mm	112mm	600×690×1050mm	120kg
MAG125-25	220V	2.2Kw	46	250mm	125mm	500×480×990mm	120kg
MAG125-30	220V	2.2Kw	46	300mm	125mm	550×480×990mm	140kg
MAG130-25	220V	2.2Kw	130	250mm	112mm	570×670×1110mm	120kg
MAG130-30	220V	2.2Kw	130	300mm	112mm	620×670×1110mm	125kg

MHJ Series Dough Mixer



MHJ-15B/25B/50B



MHJ-75B/100B/150B

Model	Voltage	Power	Speed(r/min)	Bowl	Max Kneading	Dimension	Net Weight
MHJ-15B	220V	1.5Kw	30	30L	15kg	680×400×800mm	75kg
MHJ-25B	220V	1.5Kw	30	50L	25kg	790×460×860mm	90kg
MHJ-50B	380V	2.2Kw	30	100L	50kg	1000×580×1050mm	130kg
MHJ-75B	380V	4Kw	26	150L	75kg	980×620×1060mm	190kg
MHJ-100B	380V	5.5.Kw	24	200L	100kg	1060×680×1140mm	200kg
MHJ-150B	380V	7.5Kw	24	300L	150kg	1430×690×1400mm	220kg

Bowl Cutter



MBC-5

Voltage:220V 50HZ
Power:370W
Capacity:5L
Speed:80KG/H
N.W:85KG
Dimension:53×42×54cm

MBC-30

Voltage:220V 50HZ
Power:1500W
Capacity:30L
Speed:300KG/H
N.W:125KG
Dimension:80×70×95cm

Potato Chip and Slice Cutter



JH-J300

Voltage:110/220/230V
Frequency:50/60HZ
Power:0.75Kw
Efficiency:500kg/h
Size:468×572×690mm
Weight:43kg

Rapid Sausage Filler



GC-260

Volume:26L
Voltage:110/220/230/380V
Power:0.75Kw
Productivity:400kg/h
Weight:165kg
Dimension:600x400x1240mm

Vegetable Cutter

Mixing short period of time. Suit for production line. Digital control panel, can managed all processing once before it start. Mixers head have protection while up and down. No accident allow. Bowl pushing out when the head lifting up the height. Professional hydraulic system. Bowl trolley do not loss out while mixing time. Stainless steel protection cover, suit for food manufacture safety.



Model	Voltage	Power	Dimension	Net Weight	Gross Weight
MVC-55	220V/50Hz or 110V/60Hz	350W	535×270×525mm	19kg	25kg
MVC-60	220V/50Hz or 110V/60Hz	550W	650×315×535mm	25kg	28kg
MVC-65	220V/50Hz or 110V/60Hz	750W	650×325×535mm	25kg	30kg

G007(free)	G005(free)	G003(free)	SP002(free)	SP004(free)	J404	G010
SA002	SA004	SA006	SA008	SA010	FS08/FS10	DS

Immersion Blender

Versatile and efficient: you can quickly process food to achieve different results with an excellent finish. Utmost hygiene: the components are manufactured from materials suitable for food handling and can be easily removed for fast cleaning



BLENDER BODY				
Model	Voltage	Power	Dimension-length	Speed(rpm/min)
IB220MF	220V/50Hz or 110V/60Hz	220W	∅304mm	20000rpm
IB220MV	220V/50Hz or 110V/60Hz	220W	∅304mm	4000~20000rpm
IB350CF	220V/50Hz or 110V/60Hz	350W	∅359mm	16000rpm
IB350CV	220V/50Hz or 110V/60Hz	350W	∅359mm	4000~16000rpm
IB500LF	220V/50Hz or 110V/60Hz	500W	∅359mm	16000rpm
IB500LV	220V/50Hz or 110V/60Hz	500W	∅359mm	4000~16000rpm

BLENDER TUBE			
Model	Stick Length	Diameter	Net Weight
BLD160	160mm	∅25mm	0.46kg
BLD200	200mm	∅35mm	0.69kg
BLD250	250mm	∅35mm	0.82kg
BLD300	300mm	∅35mm	1.02kg
BLD400	400mm	∅35mm	1.28kg
BLD500	500mm	∅35mm	1.56kg

BLENDER TUBE		
Model	Stick Length	Net Weight
WIK185	185mm	0.81kg
WIK250	250mm	0.86kg

Commercial Kebab Slicer



Model	Voltage	Power	Cutting Depth	Capacity	Blade Dia.
MKS100E	220V/50Hz or 110V/60Hz	80W	0-8mm	60kg/h	∅100mm
MKS100C	Li-ion Battery 12V	80W	0-8mm	60kg/h	∅100mm
MKS100T	220V/50Hz or 110V/60Hz	80W	0-8mm	60kg/h	∅100mm

Full Stainless Steel Universal Cutter



MF-04
Capacity:4L
Power:550W
Voltage:110V/220V
N.W:18KG
G.W:20KG
Size:363×318×525mm



MF-06
Capacity:6L
Power:550W
Voltage:110V/220V
N.W:22KG
G.W:23KG
Size:425×365×560mm



MF-10
Capacity:10L
Power:1100W
Voltage:110V/220V
N.W:30KG
G.W:32KG
Size:435×410×585mm



MF-17
Capacity:17L
Power:750W
Voltage:110V/220V
N.W:33KG
G.W:34KG
Size:450×400×640mm



MF-25
Capacity:25L
Power:1500W
Voltage:110V/220V
N.W:42KG
G.W:45KG
Size:550×510×740mm



MF-32
Capacity:32L
Power:1500W
Voltage:110V/220V
N.W:32KG
G.W:35KG
Size:670×620×1050mm

Potato Peeler



TP-350/450



PP-5



PP-10



PP-18

Model	Voltage	Frequency	Power	Capacity	Dimension
TP-350	110/220V	50/60HZ	0.75Kw	240kg/h	670×470×800mm
TP-450	110/220V	50/60HZ	1.5Kw	750kg/h	760×600×970mm
PP-5	110/220V	50/60HZ	0.55Kw	70-150kg/h	650×550×950mm
PP-10	110/220V	50/60HZ	0.75Kw	130-200kg/h	650×550×1000mm
PP-18	110/220V	50/60HZ	1.1Kw	250-500kg/h	650×550×1150mm

TP Series Potato Peeler



High-efficiency,each loaded potato peeling takes only 1-2 minutes.Fine and elegant appearance, easy to operate and clean.The abrasive band mounted on the inner wall is replacable.

TP-8
Voltage:110/220/230V
Frequency:50/60HZ
Power:1.1KW
Capacity:8kg
Efficiency:240-480kg/h
Weight:55kg

TP-15
Voltage:110/220/230V
Frequency:50/60HZ
Power:1.1KW
Capacity:15kg
Efficiency:480-900kg/h
Weight:94kg

TP-30
Voltage:110/220/230/380V
Frequency:50/60HZ
Power:2KW
Capacity:30kg
Efficiency:1080-2160kg/h
Weight:105kg

JH Series Meat Grinder



JH-12



JH-22



JH-32



JH-42



JH-52

Model	Voltage	Frequency	Power	Speed(kg/h)	Dimension	Net Weight
JH-12	110/220V	50/60HZ	0.8Kw	120	370×250×330mm	20kg
JH-22	110/220V	50/60HZ	1.1Kw	220	495×280×410mm	30kg
JH-32	110/220V	50/60HZ	1.5Kw	400	730×380×840mm	62kg
JH-42	220/380V	50/60HZ	2.2Kw	600	930×500×740mm	160kg
JH-52	220/380V	50/60HZ	2.2Kw	650	920×580×1090mm	165kg

TC Meat Grinder(S/S)



TC12C



TC22C



TC32C



TC42C

Model	TC12C	TC22C	TC32C	TC42C	TC42A
Material(Body)	ss	ss	ss	Iron	ss
Voltage	110V/220V/230V	110V/220V/230V	220V/380V	220V/380V	220V/380V
Frequency	50/60HZ	50/60HZ	50/60HZ	50/60HZ	50/60HZ
Power	0.55Kw	0.75Kw	1.8Kw	4Kw	4Kw
Input Power	0.8Kw	0.96Kw	2.2Kw	4.7Kw	4.7Kw
Capacity	120kg/h	220kg/h	300kg/h	650kg/h	650kg/h
Size(mm)	400×190×410	525×228×390	680×320×540	1020×530×950	1020×530×950
Net Weight	23kg	42kg	67kg	156kg	156kg



TC42A

Grain Grinder



MYS-12
Voltage:110V/220V
Power:1.1Kw
Speed:1400r/min
Net Weight:28KG
Production Capacity:15-35KG/H
Dimension:510×220×510mm



MYS-22
Voltage:110V/220V
Power:2.2Kw
Speed:1420r/min
Net Weight:40KG
Production Capacity:30-60KG/H
Dimension:550×260×430mm



MYS-30
Voltage:110V/220V
Power:3Kw
Speed:1420r/min
Net Weight:48KG
Production Capacity:30-60KG/H
Dimension:580×280×430mm

PC Series Meat Grinder



Model	Voltage	Frequency	Power	Speed(kg/h)	Dimension	Net Weight
PC-8	110/220V	50/60HZ	0.3Kw	80	460×230×370mm	14kg
PC-12	110/220V	50/60HZ	0.8Kw	120	370×190×410mm	25kg
PC-22	110/220V	50/60HZ	1.1Kw	220	430×220×420mm	28kg
PC-12A	110/220V	50/60HZ	0.8Kw	150	200×270×390mm	20kg
PC-22A	110/220V	50/60HZ	1.1Kw	180	200×270×400mm	22kg
PC-30	110/220V	50/60HZ	1.5Kw	320	350×400×700mm	45kg
PC-30L	110/220V	50/60HZ	1.5Kw	320	330×400×660mm	45kg
PC-32	380V	50/60HZ	2.2Kw	320	720×420×620mm	63kg
PC-42	380V	50/60HZ	3Kw	600	860×550×960mm	165kg

JG Bone Saw



Model	Voltage	Power	Blade Size	Thickness	Dimension	Belt Diameter	Saw Speed	Net Weight
JG210	110/220V	0.65Kw	1650×16×0.5mm	5-155mm	520×470×820mm	φ210MM	1420r/min	40kg
JG210B	110/220V	0.65Kw	1650×16×0.5mm	5-155mm	520×470×820mm	φ210MM	1420r/min	41kg
JG310	110/220V	1.1Kw	2000×20×0.5mm	5-180mm	590×570×1040mm	φ210MM	1420r/min	63kg
JG310B	110/220V	1.1Kw	2000×20×0.5mm	5-180mm	590×570×1040mm	φ210MM	1420r/min	63kg
JG350	380V	1.1Kw	2490×20×0.5mm	5-260mm	930×770×1570mm	φ300MM	960r/min	142kg
JG410	380V	2.2Kw	3460×20×0.5mm	5-350mm	1270×1020×1720mm	φ300MM	960r/min	256kg

Bread Slicer



Model	Voltage	Power	Quantity	Thickness	Dimension	Net weight
SH-31	110V60HZ or 220V50HZ	250W	31pcs	12mm	650×660×760mm	59kg
SH-39	110V60HZ or 220V50HZ	250W	39pcs	9.5mm	650×660×760mm	60kg
SH-53	110V60HZ or 220V50HZ	250W	53pcs	7mm	650×660×760mm	61kg

Meat Grinder & Slicer



Model	Voltage	Frequency	Power	Speed(kg/h)	Dimension	Net Weight
MJQ-22A	110V/220V	50/60HZ	2.2Kw	150	600×400×820mm	63kg
MJQ-22	110V/220V	50/60HZ	2.2Kw	150	620×330×600mm	63kg
MJQ-32	110V/220V	50/60HZ	2.2Kw	280	620×330×600mm	68kg
MTQ-250	110V/220V	50/60HZ	0.6Kw	250	470×270×400mm	35kg
MTQ-500	110V/220V	50/60HZ	1.1Kw	500	470×270×400mm	39kg
MTQ-800	380V	50/60HZ	0.75Kw	800	660×330×700mm	68kg
MTQA-800	380V	50/60HZ	1.5Kw	800	640×640×750mm	125kg

Semi-automatic Meat Slicer



Model	Voltage	Power	Diameter	Thickness	Dimension	N.W	Surface Craft
MS-195	110/220V	200W	195mm	0-12mm	390×360×320mm	12.5kg	Polish and anodized
MS-220	110/220V	280W	220mm	0-12mm	430×380×350mm	13.5kg	Polish and anodized
MS-220A	110/220V	280W	220mm	0-12mm	430×380×350mm	15.5kg	All body Coated
MS-220L	110/220V	280W	220mm	0-12mm	430×380×350mm	15.5kg	Polish and anodized
MS-250	110/220V	300W	250mm	0-12mm	480×370×360mm	16kg	Polish and anodized
MS-250A	110/220V	300W	250mm	0-12mm	480×370×360mm	16kg	All body Coated
MS-250L	110/220V	300W	250mm	0-12mm	480×370×360mm	16kg	Polish and anodized
MS-300	110/220V	420W	300mm	0-15mm	530×460×460mm	24.5kg	Polish and anodized
MS-300A	110/220V	420W	300mm	0-15mm	600×430×460mm	25kg	All body Coated
MS-300L	110/220V	420W	300mm	0-15mm	530×460×460mm	24.5kg	Polish and anodized

Automatic Meat Slicer



MS-300E Voltage:110/220V Power:500W Diameter:300mm Thickness:0-15mm Dimension:600×540×680mm Weight:44kg	MS-300L Voltage:110/220V Power:550W Diameter:300mm Thickness:0-15mm Dimension:640×600×750mm Weight:66kg	MS-300BN Voltage:110/220V Power:550W Diameter:300mm Thickness:0-15mm Dimension:650×600×750mm Weight:68kg Surface Craft: With fully anodized body	MS-350B Voltage:110/220/380V Power:750W×2 Diameter:350mm Thickness:0-18mm Dimension:1030×740×1460mm Weight:228kg Surface Craft: With fully anodized body
--	--	--	--

Dough Divider&Rounder& French Roll Moulder



RMK-36A
Manual Dough Divider
Scope:30-140g/pcs
Size:530×460×1620mm
Weight:70kg



RMK-20
Voltage:380V
Specification:20pcs/time
Size:610×680×1000mm
Weight:350kg
Power:1.5KW
Dividing Weight:100~800g



RMK-36
Voltage:110V/220V
Specification:36pcs/time
Size:580×500×1350mm
Weight:180kg
Power:0.75KW
Dividing Weight:30~180g



RMG-30S/36S
Voltage:380V
Specification:30/36pcs/time
Size:640×540×2100mm
Weight:310kg
Power:0.75KW
Dividing Weight:30~100g/20~70g



RMZ-380
Voltage:380V
Specification:380mm
Size:1400×670×1120mm
Weight:200kg
Power:0.75KW



RMZ-750
Voltage:380V
Scope:50-1250g/pcs
Size:1010×960×1080mm
Weight:290kg
Power:1.0KW
Kneading Capacity:30-120kg

Pizza Dough Roller



DR-1

Voltage:110V/220V
Power:370W
Dough Weight:50-500g
Pizza Size: 100-400mm
N.W.:39KG
Dimension:530x530x650mm



DR-2

Voltage:110V/220V
Power:370W
Dough weight:50-500g
Pizza Size: 100-300mm
N.W.:37KG
Dimension:530x480x560mm

Dough Sheeter



RMQ-380/520/650



RMQ-450A/520A

Model	Voltage	Power	Conveyer Belt Size	Specification	Dimension	Net weight
RMQ-380	110V/220V/380V	550W	360×1700mm	380mm	2100×810×1050mm	170kg
RMQ-520	110V/220V/380V	550W	500×2000mm	520mm	880×2550×1180mm	190kg
RMQ-650	110V/220V/380V	750W	630×2400mm	650mm	1100×2950×1180mm	225kg
RMQ-450A	110V/220V/380V	550W	430×1700mm	450mm	820×1770×620mm	117kg
RMQ-520A	110V/220V/380V	550W	500×2000mm	520mm	880×2080×620mm	125kg

Orange Juicer



M2000E-2
Voltage:220V/50HZ 110V/60HZ
Power:0.12KW
Size of Orange:40~90mm
Output:20 Orange/min
Size:400×300×600mm
Weight:40kg



M2000E-1
Voltage:220V/50HZ 110V/60HZ
Power:0.12KW
Size of Orange:40~90mm
Output:20 Orange/min
Size:400×300×780mm
Weight:50kg



M2000E-4
Voltage:220V/50HZ 110V/60HZ
Power:0.12KW
Size of Orange:40~90mm
Output:20 Orange/min
Size:400×450×900mm
Weight:55kg



M2000A-1
Voltage:220V/50HZ 110V/60HZ
Power:0.37KW
Size of Orange:60~90mm
Output:40 Orange/min
Size:660×640×1720mm
Weight:92kg



M2000A-2
Voltage:220V/50HZ 110V/60HZ
Power:0.37KW
Size of Orange:60~90mm
Output:40 Orange/min
Size:660×640×1200mm
Weight:68kg



2000JP-1/2000JP-2
Voltage:220V/50HZ 110V/60HZ
Power:0.55/0.75KW
Size:455×365×585mm
Weight:30kg



1000JP
Voltage:220V/50HZ 110V/60HZ
Power:0.37KW
Size:370×290×435mm
Weight:15kg

Sugar-cane Juicer



MXZ-17



MXZ-80



MXZ-80T



MXZ-80DC (Battery)



MXZ-80DCM (220V/Battery)

- ▶ Electric battery double poer(both electric and battery) type available
- ▶ Roller distance adjustable automatically
- ▶ Made by full stainless steel
- ▶ High efficiency and stable performance
- ▶ Elegant and delicate design



Model	Power	Capacity	Net weight	Gross weight	Dimensions(mm)	Packing size(mm)
MXZ-17		150kg/h	38kg	42kg	400×450×380	430×480×520
MXZ-80	750W/220V	300kg/h	55kg	65kg	415×490×840	480×560×900
MXZ-80T	750W/220V	300kg/h	55kg	65kg	415×520×840	480×600×980
MXZ-80DC	Battery (2*12AH)	320kg/h	50kg	60kg	470×370×600	570×470×750
MXZ-80DCM	220V/Battery	320kg/h	51kg	61kg	470×370×600	570×470×750

Commercial Blender

- ▶ Soyabean milk:grinding all kinds of grains into smooth drinks without losing nutrition.
- ▶ Smoothies:crush ice into powder in few seconds,results in tasty smoothies.
- ▶ Fruit juice:blend fruits into pure juice in short time,with full nutrition.
- ▶ Meat:result in minced meat paste in short time.



MJD-318
Voltage:110/220V
Power:1500W
Capacity:2L
Net Weight:4.8KG
Speed:28000(r/min)
Dimension:220×195×490mm
Packing Size:315×260×385mm



MJD-319
Voltage:110/220V
Power:1600W
Capacity:2L
Net Weight:5KG
Speed:32000(r/min)
Dimension:220×195×490mm
Packing Size:315×260×385mm



MJD-328
Voltage:110/220V
Power:1860W
Capacity:2.5L
Net Weight:6KG
Speed:42000(r/min)
Dimension:230×220×540mm
Packing Size:445×335×308mm



MJD-767
Voltage:110/220V
Power:1500W
Capacity:2.0L
Net Weight:4kg
Speed:23000~26000(r/min)
Dimension:235×205×450mm
Packing Size:315×260×385mm



MJD-329
Voltage:110/220V
Power:2200W
Capacity:3.6L
Net Weight:6.5KG
Speed:45000(r/min)
Dimension:230×220×565mm
Packing Size:445×335×308mm



MJD-390
Voltage:110V/220V
Power:2200W
Capacity:3.9L
Net Weight:6.5kg
Speed:36000~38000(r/min)
Dimension:255×220×565mm
Packing Size:445×335×308mm



MJD-2508
Voltage:110/220V
Power:1800W
Capacity:1.5L
Net Weight:7.5KG
Speed:30000(r/min)
Dimension:290×285×540mm
Packing Size:600×305×560mm



MJD-2518
Voltage:110/220V
Power:1800W
Capacity:1.5L
Net Weight:7.5KG
Speed:30000(r/min)
Dimension:290×285×540mm
Packing Size:600×305×560mm



Milk Mixer



EMS-1
Milk Mixer
Voltage:110/220V
Power:150W
Size:19x16x53cm
N.W:6KG



EMS-2
Milk Mixer
Voltage:110/220V
Power:150W+150W
Size:23x23x53cm
N.W:11KG



MBL-01
Voltage:110/220V
Dimension:240×225×520mm
Packing Size:55×54×59cm
Net Weight:8KG



MBL-02
Voltage:110/220V
Dimension:330×160×500mm
Packing Size:56×33.5×53cm
Net Weight:16KG

Food & Vegetable Cutter Series



MG-01
Stainless Steel Electric French Fries Machine
Voltage:110V 60HZ/220V 50HZ
Power:60W
G.W:7kg
N.W:6.8kg



MG-02
Stainless Steel Horizontal Manual Potato Chips Machine
Product Material:die-casting aluminum
Blade:1/2 or 1/4 or 3/8" or wedge blade
Packing: 4pcs/ctn



MG-03
Aluminum Die-casting Horizontal Manual Potato Chips Machine
Production Material:Aluminum die-casting
Blade:1/2 or 1/4 or 3/8" or wedge blade
Packing:4pcs/ctn



MG-04
Vertical Manual Potato Chips Machine
Model:MG-04
G.W:7.5Kg
N.W:7.0Kg
Function:cut the potatoes, carrots, taro, pumpkin, winter melon, cucumber.etc



MG-05
Manual Juicer A
Product Material:Stainless Steel
G.W:5.8kg
N.W:5.6kg



MG-06
Manual Juicer
Model:MG-06
Product Material:Steel
G.W:5.6Kg
N.W:5.8Kg



MG-07
Manual Juicer
Model:MG-07
Product Material:Steel
G.W:6.4Kg
N.W:6.0Kg



MG-08
Manual Juicer
Model:MG-08
Product Material:Steel
G.W:6.4Kg
N.W:6.0Kg



MG-09
A 100 burger machine
Model:MG-09
Product Material:Stainless Steel
G.W:5.0Kg
N.W:4.8Kg



MG-10
A 130 burger machine
Model:MG-10
Product Material:Stainless Steel
G.W:5.2Kg
N.W:5.0Kg



MG-11
Manual Potato Tower Crane
Product Material:Stainless Steel
G.W:1.1Kg
N.W:1.0Kg



MG-12
Electric Potato Tower Crane
Product Material:Stainless Steel
G.W:5.3kg
N.W:5.0kg



MG-13
Cut the lettuce,dicing machine
Product material:aluminum die-casting
Specification:(long,wide,high) 18",13",20"
Packing:2pcs/ctn



MG-14
Easy Onion Slicer
Model:MG-14
Product Material:die-casting aluminum
Specification:(long,wide,high) 18",13",20"
Packing:4pcs/ctn

Food & Vegetable Cutter Series



MG-15
Vegetable Cutting Machine/Butyl
Model:MG-15
Product Material:Aluminum Die-casting
Blade:1/4" ;3/8" / 1/2",equipped with stainless steel blade
Packing:4pcs/ctn



MG-16
Fruit block machine
Model:MG-16
Product Material:Aluminum Die-casting
Blade: (long,wide,high) 18",13",20"
Packing:4pcs/ctn



MG-17
Mutton roll cutting machine
Product material:Stainless steel
G.W:5.5Kg
N.W:5.0Kg



MG-18
Vacuum Molding Machine
Model:MG-18
G.W:5.0Kg
N.W:4.8Kg

Simple Electric Fryer



EF-81T



EF-81L



EF-82T

Standard Features

- 1.High grade stainless Steel Construction.Beautiful and practical.
- 2.Efficient Heating element,warming rapidly.
- 3.Overtemperature protection,safe&reliable.
- 4.Water proof on/off switch with oil resistant protection cover.



Model	Voltage(V)	Capacity(L)	Power(KW)	Size(mm)	Packing Size(mm)	N.W(kg)	GW(kg)	Remarks
EF-81	220/50HZ	6	2.5	280x416x310	330x490x330	3.8	4.3	
EF-81T	220/50HZ	6	2.5	280x416x310	330x490x330	3.8	4.3	with timer
EF-81L	220/50HZ	6	2.5	280x416x310	330x490x330	3.8	4.3	with temp limiter
EF-81TL	220/50HZ	6	2.5	280x416x310	330x490x330	3.8	4.3	with timer&temp limiter
EF-82	220/50HZ	6+6	2.5+2.5	550x416x310	610x490x330	6.5	7.5	
EF-82T	220/50HZ	6+6	2.5+2.5	550x416x310	610x490x330	6.5	7.5	with timer
EF-82L	220/50HZ	6+6	2.5+2.5	550x416x310	610x490x330	6.5	7.5	with temp limiter
EF-82TL	220/50HZ	6+6	2.5+2.5	550x416x310	610x490x330	6.5	7.5	with timer&temp limiter

Standing Electric Fryer



EF-162V/C



EF-481/C



EF-482/C



EF-212



EF-302/C



Model	Voltage	Frequency	Power	Capacity	Temperature control range	Size	Net Weight
EF-162V/C	220/380V	50HZ	6Kw	16+16L	60°C~200°C	345x525x945mm	20.6kg
EF-481/C	380V	50HZ	9Kw	48L	60°C~200°C	450x685x1020mm	32.5kg
EF-482/C	380V	50HZ	9+9Kw	48+48L	60°C~200°C	870x685x1020mm	56kg
EF-212	220V	50HZ	3+3Kw	21+21L	60°C~200°C	840x510x1110mm	32kg
EF-302/C	220/380V	50HZ	6+6Kw	6+6L	60°C~200°C	955x610x1020mm	38.5kg

Electric Fryer



EF-061/081/081L



EF-062/082L



EF-101/131/171



EF-102/132/172



Model	Voltage	Frequency	Power	Capacity	Temperature control range	Size	Net Weight
EF-061	220V	50HZ	2Kw	6L	60°C~200°C	190x440x270mm	4.5kg
EF-081	220V	50HZ	2Kw	8L	60°C~200°C	190x440x320mm	5.5kg
EF-081L	220V	50HZ	3Kw	8L	60°C~200°C	230x420x310mm	5.5kg
EF-062	220V	50HZ	2+2Kw	6+6L	60°C~200°C	380x440x270mm	7kg
EF-082L	220V	50HZ	3+3Kw	8+8L	60°C~200°C	480x420x310mm	8kg
EF-101	220V	50HZ	3Kw	10L	60°C~200°C	290x440x285mm	6kg
EF-131	220V	50HZ	5Kw	13L	60°C~200°C	290x440x330mm	6.5kg
EF-171	220V	50HZ	5Kw	17L	60°C~200°C	293x500x330mm	8kg
EF-102	220V	50HZ	3+3Kw	10+10L	60°C~200°C	590x440x285mm	9.5kg
EF-132	220V	50HZ	5+5Kw	13+13L	60°C~200°C	590x440x330mm	10.5kg
EF-172	220V	50HZ	5+5Kw	17+17L	60°C~200°C	595x500x330mm	15.5kg



EF-101V/131V



EF-161V



EF-102V/132V



EF-162V



Model	Voltage	Frequency	Power	Capacity	Temperature control range	Size	Net Weight
EF-101V	220V	50HZ	4Kw	10L	60°C~200°C	280x460x325mm	7.5kg
EF-131V	220V	50HZ	5Kw	13L	60°C~200°C	310x480x345mm	8kg
EF-161V	220V	50HZ	5Kw	16L	60°C~200°C	340x520x365mm	9kg
EF-102V	220V	50HZ	4+4Kw	10+10L	60°C~200°C	570x460x325mm	11kg
EF-132V	220V	50HZ	5+5Kw	13+13L	60°C~200°C	630x480x345mm	13kg
EF-162V	220V	50HZ	5+5Kw	16+16L	60°C~200°C	690x520x365mm	15kg



EF-301V(A)/301V(B)



EF-191V/192V



EF-18V



Model	Voltage	Frequency	Power	Capacity	Temperature control range	Size	Net Weight
EF-301V(A)	220V	50HZ	6Kw	30L	60°C~200°C	600x530x420mm	16.2kg
EF-301V(B)	220V	50HZ	6Kw	30L	60°C~200°C	600x530x420mm	16.5kg
EF-191V	220V	50HZ	5Kw	19L	60°C~200°C	340x540x390mm	11kg
EF-192V	220V	50HZ	5+5Kw	19+19L	60°C~200°C	690x540x390mm	18.5kg
EF-18V	220V	50HZ	3Kw	18L	60°C~200°C	480x450x240mm	10kg

Gas Fryer



GF-71 GAS GF-72 GAS GF-181 GAS GF-182 GAS

Model	Gas pressure(PA)	Capacity	Used Gas	Size	Net Weight
GF-71	2800-3000pa	10L	Bottle LPG	287×470×480mm	12.5kg
GF-72	2800-3000pa	10+10L	Bottle LPG	578×470×480mm	21kg
GF-181	2800-3000pa	18L	Bottle LPG	340×615×630mm	22kg
GF-182	2800-3000pa	18+18L	Bottle LPG	680×615×630mm	38kg

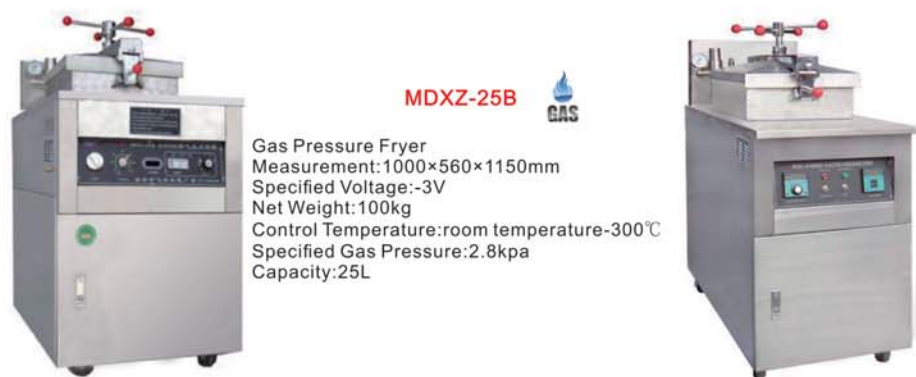


GF-84 GAS GF-85 GAS GF-181C GAS GF-182C GAS GF-481C GAS

Model	Gas pressure(PA)	Capacity	Used Gas	Size	Net Weight
GF-84	2800-3000pa	30L	Bottle LPG	580×450×810mm	23kg
GF-85	2800-3000pa	14L+14L	Bottle LPG	580×450×810mm	23kg
GF-181C	2800-3000pa	18L	Bottle LPG	342×585×1025mm	25.3kg
GF-182C	2800-3000pa	18L+18L	Bottle LPG	680×585×1025mm	43kg
GF-481C	2800-3000pa	48L+48L	Bottle LPG	450×685×1020mm	48kg



Pressure Fryer



MDXZ-25B GAS

Gas Pressure Fryer
Measurement:1000×560×1150mm
Specified Voltage:-3V
Net Weight:100kg
Control Temperature:room temperature-300℃
Specified Gas Pressure:2.8kpa
Capacity:25L

MDXZ-24

Electric Pressure Fryer
Measurement:980×560×1150mm
Specified Voltage:~3N380V
Specified Power:12kw
Net Weight:85kg
Control Temperature:room temperature-200℃
Capacity:24L

Electric Combination Cooking Line



Electric 4-Plate Cooker With Oven
MER-74V/94V
Voltage:3N~380V
Size:700×700×920mm
800×900×920mm
Power:12.8KW/14KW

Electric 4-Plate Cooker With Cabinet
MER-74C/94C
Voltage:3N~380V
Size:700×700×920mm
800×900×920mm
Power:8KW/9.2KW

Electric Pasta Cooker with Cabinet
MEPC-709C/912C
Voltage:3N~380V
Size:700×700×920mm
800×900×920mm
Power:12KW/18KW
Basket:9/12pcs



Electric Lave Rock Grill with Cabinet
MECB-7C/9C
Voltage:3N~380V
Size:700×700×920mm
800×900×920mm
Power:9KW/12KW

Electric Griddle with Cabinet
MEG-7C/9C
Voltage:3N~380V
Size:700×700×920mm
800×900×920mm
Power:9KW/12KW

Electric Fryer with Cabinet
MEF-71C/91C
Voltage:3N~380V
Size:350×700×920mm
400×900×920mm
Power:12KW/12KW

Electric Fryer with Cabinet
MEF-72C/92C
Voltage:3N~380V
Size:700×700×920mm
800×900×920mm
Power:24KW/24KW

Note:Griddle plate can choose all falt /all groved/half flat &half grooved/ chrome surface

Electric&Gas Combination Cooking Line



EG650-RAYE

EG650-RHGZ



GG650-RAYE GAS

GG650-RHGZ GAS

Model	Voltage(V)	Power(KW)	Size(mm)
EG-650-RAYE	110V/220V	30	1800x650x(350+90)
EG-650-RHGZ	110V/220V	30	1800x650x(350+90)
GG-650-RAYE	LPG	30	1800x650x(350+90)
GG-650-RHGZ	LPG	30	1800x650x(350+90)

Gas Combination Cooking Line



Gas Lave Rock Grill with Cabinet
MGCB-7C
 Heat Power:16KW
 Tube Dia:G3/4"
 Size:700×700×920mm
 Gas class:LPG,Natural Gas Coal Gas

MGCB-9C
 Heat Power:18KW
 Tube Dia:G3/4"
 Size:800×900×920mm
 Gas class:LPG,Natural Gas Coal Gas



Gas Range with Cabinet
MGR-74C
 Heat Power:24KW
 Tube Dia:G3/4"
 Size:700×700×920mm
 Gas class:LPG,Natural Gas Coal Gas

MGR-94C
 Heat Power:24KW
 Tube Dia:G3/4"
 Size:800×900×920mm
 Gas class:LPG,Natural Gas Coal Gas



Gas Fryer with Cabinet
MGF-72C
 Heat Power:31KW
 Tube Dia:G3/4"
 Size:700×700×920mm
 Gas class:LPG,Natural Gas Coal Gas

MGF-92C
 Heat Power:31KW
 Tube Dia:G3/4"
 Size:800×900×920mm
 Gas class:LPG,Natural Gas Coal Gas



Gas Range with Oven
MGR-76C
 Heat Power:31KW
 Tube Dia:G3/4"
 Size:1050×700×920mm
 Gas class:LPG,Natural Gas Coal Gas

MGR-96C
 Heat Power:31KW
 Tube Dia:G3/4"
 Size:1200×900×920mm
 Gas class:LPG,Natural Gas Coal Gas



Gas Fryer with Cabinet
MGF-71C
 Heat Power:15,5KW
 Tube Dia:G3/4"
 Size:350×700×920mm
 Gas class:LPG,Natural Gas Coal Gas

MGF-91C
 Heat Power:15,5KW
 Tube Dia:G3/4"
 Size:400×900×920mm
 Gas class:LPG,Natural Gas Coal Gas



Gas Griddle with Cabinet
MGT-7C
 Heat Power:11,8KW
 Tube Dia:G3/4"
 Size:700×700×920mm
 Gas class:LPG,Natural Gas Coal Gas

MGT-9C
 Heat Power:11,8KW
 Tube Dia:G3/4"
 Size:800×900×920mm
 Gas class:LPG,Natural Gas Coal Gas

Note:Griddle plate can choose all falt /all groved/half flat & half grooved/ chrome surface



Counter Top Electric&Gas Cooking Line



EH-600TG



EH-600TH



EH-600TZ-2



EH-600TM-6
(6 pcs pasta cooker)



EH-600TE-4
(4pcs pasta cooker)



EH-600TB-4



GH-6004R



GH-6004M



GH-600RG



GH-600RH



GH-6006R



GH-600RM
(6 pcs pasta cooker)

Model	Voltage(V)	Power(KW)	Size(mm)	N.W.(kg)	Remarks
EH-600TG	110V/220V	5	600x600x(350+90)	43	Grill-12mm
EH-600TH	110V/220V	7.2	600x600x(350+90)	45	
EH-600TZ-2	110V/220V	2.5+2.5	600x600x(350+130)	23	
EH-600TM-6	110V/220V	6	600x600x(350+90)	25	
EH-600TE-4	110V/220V	8	600x600x(350+90)	30	
EH-600TB-4	110V/220V	1.5	700x600x(350+90)	24	
GH-6004R	LPG	4x5	560x630x(300+160)	36	
GH-6004M	LPG	4x5	560x610x(350+90)	36	
GH-600RG	LPG	2x4	600x610x(350+90)	55	Grill-12mm
GH-600RH	LPG	2x6	650x610x(350+90)	60	
GH-6006R	LPG	2x5	600x610x(350+90)	30	
GH-600RM	LPG	3x3	600x610x(350+90)	30	



Lava Rock Grill



CB-12
Size:310x660x390mm
Gas class:LPG,Natural Gas



CB-24
Size:610x660x390mm
Gas class:LPG,Natural Gas



CB-36
Size:915x660x390mm
Gas class:LPG,Natural Gas

- ▶ Removable stainless steel fire box for easy cleaning and maintenance
- ▶ Heavy duty cast iron grate
- ▶ Full width stainless steel drip pan
- ▶ Heavy duty brass valves
- ▶ Enclosed back redirects heat to product not out the back
- ▶ Superior burners allow for fast recovery and improved heat distribution

Gas Grill



GG-400



GG-650C



GG-650



GG-950

- Standard features**
- 1.All stainless steel shell,novel style.reasonable structure, convenient operation.
 - 2.A non-stick coating,don't worry about sticking with plate:fried steak, fried food faster.
 - 3.The middle is provided with insulation layer,reduce the heat dissipation ,the heating is more efficient.



All flat



Half flat & half ribbed



Mirror surface/Chroming

Model	Burners	Grill Plate	Power(Kw)	Size(mm)	Packing Size(mm)	NW(kg)	GW(kg)
GG-400	1	All flat	3	400x610x340	450x630x380	22	25
GG-400C	1	Chroming	3	400x610x340	450x630x380	22	25
GG-650	2	All flat	6	650x610x340	710x630x380	33	37
GG-650G	2	Half flat & half ribbed	6	650x610x340	710x630x380	33	37
GG-650C	2	Chroming	6	650x610x340	710x630x380	33	37
GG-800	2	All flat	6	800x610x340	860x630x380	44	50
GG-800G	2	Half flat & half ribbed	6	800x610x340	860x630x380	44	50
GG-800C	2	Chroming	6	800x610x340	860x630x380	44	50
GG-950	3	All flat	9	950x610x340	1010x630x380	52	60
GG-950G	3	Half flat & half ribbed	9	950x610x340	1010x630x380	52	60
GG-950C	3	Chroming	9	950x610x340	1010x630x380	52	60
GG-1150	4	All flat	12	1150x610x340	1210x630x380	64	74
GG-1150G	4	Half flat & half ribbed	12	1150x610x340	1210x630x380	64	74
GG-1150C	4	Chroming	12	1150x610x340	1210x630x380	64	74

Electric Grill



EG-280/360/460



EG-500D



EG-750



EG-500

- Standard features**
- 1.All stainless steel shell,novel style.reasonable structure, convenient operation.
 - 2.A non-stick coating,don't worry about sticking with plate:fried steak, fried food faster.
 - 3.The middle is provided with insulation layer,reduce the heat dissipation ,the heating is more efficient.



All flat



Half flat & half ribbed



Mirror surface/Chroming



Model	Voltage(V)	Grill Plate	Power(KW)	Size(mm)	Packing Size(mm)	NW(kg)	GW(kg)
EG-280	220~240	All flat	1.8	280x380x230	330x500x250	11	13
EG-360	220~240	All flat	2	360x450x250	410x510x260	20	22
EG-460	220~240	All flat	2.5	460x465x255	510x520x290	21	23
EG-500	220~240	All flat	3	500x520x310	550x580x340	30	32
EG-500D	220~240	Chroming	3	500x520x310	550x580x340	30	32
EG-600	220~240	All flat	2.5+2.5	600x520x310	650x580x340	33	36
EG-600-2	220~240	Half flat & half ribbed	2.5+2.5	600x520x310	650x580x340	33	36
EG-600D	220~240	Chroming	2.5+2.5	600x520x310	650x580x340	33	36
EG-750	220~240	All flat	3+3	750x520x310	800x580x340	38	41
EG-750-2	220~240	Half flat & half ribbed	3+3	750x520x310	800x580x340	38	41
EG-750D	220~240	Chroming	3+3	750x520x310	800x580x340	38	41
EG-822	220~240	Half flat & half ribbed	2.2+2.2	730x520x230	755x525x275	22	23
EG-1000	220~240	All flat	3+3	1000x520x310	1050x580x340	47	52
EG-1000-2	220~240	Half flat & half ribbed	3+3	1000x520x310	1050x580x340	47	52
EG-1000D	220~240	Chroming	3+3	1000x520x310	1050x580x340	47	52

USA Giant-Size Electric Griddle



MEG-24

Voltage:220V 50HZ
Power:6KW
Thickness of the hot plate:20mm
Dimension:610x615x360mm



MEG-36

Voltage:220V 50HZ
Power:9KW
Thickness of the hot plate:20mm
Dimension:910x615x360mm

USA Giant-Size Electric Griddle



FN-01

Countertop electric griddle
16"x15.5"(406x394mm) cooking plate
12mm (1/2") thick cooking plate
Heavy duty stainless steel construction
Single adjustable cooking zones
50-300°C/150-570 F adjustable temperature range
Removable grease tray
4" adjustable stainless steel feet



FN-02

Countertop electric griddle
24"x15.5"(610x394mm) cooking plate
12mm (1/2") thick cooking plate
Heavy duty stainless steel construction
Double adjustable cooking zones
50-300°C/150-570 F adjustable temperature range
Removable grease tray
4" adjustable stainless steel feet



FN-03

Countertop electric griddle
30"x15.5"(760x394mm) cooking plate
12mm (1/2") thick cooking plate
Heavy duty stainless steel construction
Three adjustable cooking zones
50-300°C/150-570 F adjustable temperature range
Removable grease tray
4" adjustable stainless steel feet



FN-04A

Countertop electric griddle
36"x15.5"(914x394mm) cooking plate
12mm (1/2") thick cooking plate
Heavy duty stainless steel construction
Three adjustable cooking zones
50-300°C/150-570 F adjustable temperature range
Removable grease tray
4" adjustable stainless steel feet



FN-04B

Countertop electric griddle
36"x15.5"(914x394mm) cooking plate
25mm (1") thick cooking plate
Heavy duty stainless steel construction
Three adjustable cooking zones
50-300°C/150-570 F adjustable temperature range
Removable grease tray
4" adjustable stainless steel feet



FN-05

Countertop electric griddle
48"x20.5"(1219x521mm) cooking plate
25mm (1") thick cooking plate
Heavy duty stainless steel construction
Four adjustable cooking zones
50-300°C/150-570 F adjustable temperature range
Removable grease tray
4" adjustable stainless steel feet

Model	Voltage(V)	Grill Plate	Power(KW)	Size(mm)	Weight(kg)
FN-01	110V/220V/380V	All flat	3	410x490x243	24
FN-02	110V/220V/380V	All flat	3.56	610x490x243	36
FN-03	110V/220V/380V	All flat	4.5	765x490x243	44
FN-04A	110V/220V/380V	All flat	6	919x490x243	56
FN-04B	110V/220V/380V	All flat	10.8	919x490x243	90
FN-05	110V/220V/380V	All flat	9+9	1224x530x243	110

Electric Bain Marie



BM-01

Voltage:110V/220V
Size:1455x670x800+600mm
Power:2KW



BM-02

Voltage:110V/220V
Size:1455x670x800+600mm
Power:2KW



BM-03

Voltage:110V/220V
Size:1455x670x800mm
Power:2KW



BM-04

Voltage:110V/220V
Size:1455x670x800+600mm
Power:2KW



BM-05

Voltage:110V/220V
Size:1450x670x800mm
Power:2KW



BM-06

Voltage:110V/220V
Size:1500x600x850mm
Power:2KW



BM-07

Voltage:110V/220V
Size:1500x1400x850+700mm
Power:4KW



BM-08

Voltage:110V/220V
Size:1600x800x850+700mm
Power:3KW

Electric Bain Marie



MFBM-3

Voltage:220V/50HZ
Size:910x350x320mm
Power:1.5KW
Remarks:1/2x4"GN Panx3



MFBM-4

Voltage:220V/50HZ
Size:1170x350x320mm
Power:1.5KW
Remarks:1/2x4"GN Panx4



MFBM-5

Voltage:220V/50HZ
Size:1430x350x320mm
Power:1.8KW
Remarks:1/2x4"GN Panx5



EBM-3(3 Basins)



EBM-5(5 Basins)



EBM-6(6 Basins)

Model	Voltage(V)	Frequency	Power(KW)	Dimension(mm)	Temperature control range	NW(kg)
EBM-3	220V	1/2x4"x3	1.0	950x365x330	30°C~85°C	17
EBM-4	220V	1/2x4"x4	1.5	1215x365x330	30°C~85°C	21
EBM-5	220V	1/2x4"x5	1.8	1485x365x330	30°C~85°C	26
EBM-6	220V	1/2x4"x6	1.8	1755x365x330	30°C~85°C	31
EBM-43	220V	1/3x4"x4	1.0	862x365x330	30°C~85°C	16
EBM-53	220V	1/3x4"x5	1.5	1039x365x330	30°C~85°C	18.5
EBM-63	220V	1/3x4"x6	1.5	1230x365x330	30°C~85°C	21
EBM-73	220V	1/3x4"x7	1.5	1393x365x330	30°C~85°C	23.5



BM-2T

Voltage:220V 50HZ
Size:430x680x275mm
GN Pan Qty:1/2x100mmx2pcs
Power:1KW



BM-4T

Voltage:220V 50HZ
Size:750x680x275mm
GN Pan Qty:1/2x100mmx4pcs
Power:1.5KW



BM-6T

Voltage:220V 50HZ
Size:1100x680x275mm
GN Pan Qty:1/2x100mmx6pcs
Power:1.8KW



BM-8T

Voltage:220V 50HZ
Size:1450x680x275mm
GN Pan Qty:1/2x100mmx8pcs
Power:1.8KW

Food Warmer Cart



CE



MFW-6

Voltage:220V/50HZ
Capacity:6 Pans
Power:1700W
Dimension:730x970x1580mm
Packing Size:780x1020x1630mm



MFW-10

Voltage:220V/50HZ
Capacity:10 Pans
Power:2200W
Dimension:730x1000x2000mm
Packing Size:780x1050x2050mm



MFW-20

Voltage:220V/50HZ
Capacity:20 Pans
Power:2700W
Dimension:1550x1000x2000mm
Packing Size:1600x1050x2050mm

Warming Showcase



MBV-861
Voltage: 110V/220V
Size: 380×490×560mm
Power: 1.2KW



MBV-862
Voltage: 110V/220V
Size: 650×490×580mm
Power: 1.2KW



MBV-863
Voltage: 110V/220V
Size: 900×490×580mm
Power: 1.6KW



MBV-962
Voltage: 110V/220V
Size: 700×490×600mm
Power: 1.24KW



MB-601
Voltage: 110V/220V
Size: 660×440×635mm
Power: 1.84KW
Temp: 30~110°C



MB-602
Voltage: 110V/220V
Size: 900×480×590mm
Power: 1.84KW
Temp: 30~110°C



MB-603
Voltage: 110V/220V
Size: 1200×480×810mm
Power: 2.2KW
Temp: 30~110°C



MBV-836
Voltage: 110V/220V
Size: 460×350×980mm
Power: 0.8KW
Temp: 30~110°C



MBV-808
Voltage: 110V/220V
Size: 660×480×600mm
Power: 0.91KW



MFS-1P
Voltage: 110V/220V
Power: 0.85KW
Temp: 30~110°C
Dimension: 350×390×520mm
N.W: 16kg



MFS-580
Voltage: 110V/220V
Power: 1KW
Temp: 30~110°C
Dimension: 640×360×540mm
N.W: 20kg



MB-1P
Voltage: 110V/220V
Size: 350×425×500mm
Power: 0.85KW
Temp: 30~110°C



MB-13BW
Voltage: 110/220V
Size: 500×450×770mm
Power: 850W
Temp: 30~110°C
N.W: 26kg



MB-14BW
Voltage: 110/220V
Size: 550×450×770mm
Power: 850W
Temp: 30~110°C
N.W: 38kg



MLW-1200S
Voltage: 110/220V
Size: 1200×750×860mm
Power: 3000W
Temp: 30~110°C



MLW-1500S
Voltage: 110/220V
Size: 1500×750×860mm
Power: 3800W
Temp: 30~110°C

Popcorn Machine



MVBG-1708
Voltage: 110V /220V
Capacity: 8OZ
Size: 500×360×610mm
Power: 1.3KW



MTBG-82
Voltage: 110V /220V
Capacity: 8OZ
Size: 560×420×680mm
Power: 1.3KW



MB-826Y
Voltage: 110V /220V
Capacity: 8OZ
Size: 560×420×740mm
Power: 1.4KW



MVBG-802(Luxury)
Voltage: 110V /220V
Capacity: 8OZ
Size: 560×420×740mm
Power: 1.4KW



MTP-8R
Voltage: 110V/220V
Heating Power: 0.87KW
N.W: 19KG
Size: 525×445×650mm



Popcorn Machine With Cart
MVC-300
Capacity: 8OZ
Cart Size: 696×364×847mm



Popcorn Machine With Cart
MVC-600
Capacity: 8OZ
Cart Size: 1000×530×760mm



MB-8R CE RoHS
Voltage: 110V /220V
Capacity: 8 Oz
Power: 870W
Dimensions: 765×445×1515mm
Weight: 35.8Kg

Food Dehydrator



FK-02
Voltage: 120-240V/50-60HZ
Power: 1000W
Inside temperature: 30-75°C
APPROVAL: CE
Unit Dimension: W 406 ×D 433×H 511mm
Box Dimension: W 665 ×D 550×H 584mm
N.W.: 12.9Kg
G.W.: 13.9Kg

Commercial food dehydrator, also work as fruit and vegetable dryer, healthy way to preserve fruits, meats, vegetables, herbs, flowers and breads etc. Stainless steel construction and forced air convection to dry food evenly and quickly. Compact design, space saving and easy portable, large dehydrating area for high output.

Potato Chip Worker



MVF-88
Voltage: 220V/50HZ
Power: 0.68KW
Dimension: 80×70×65cm
N.W: 26kg



MVF-96
Potato Chip Worker
Voltage: 220V/50HZ
Power: 0.75KW
Dimension: 60×70×150cm
N.W: 35kg



MVF-98
Potato Chip Worker
Voltage: 220V/50HZ
Power: 0.91KW
Dimension: 100×70×150cm
N.W: 80kg

Gas Stove



4-Burner Gas Stove
MFGR-4T
Gas Type:LPG
Size:840×870×410mm
Power:10995BTU/h
Weight:45kg



6-Burner Gas Stove
MFGR-6T
Gas Type:LPG
Size:1200×870×410mm
Power:16492BTU/h
Weight:63kg



8-Burner Gas Stove
MFGR-8T
Gas Type:LPG
Size:1580×870×410mm
Power:21989BTU/h
Weight:80kg



4-Burner Gas Stove
MFGR-4W
Gas Type:LPG
Size:840×870×830mm
Power:10995BTU/h
Weight:50kg



6-Burner Gas Stove
MFGR-6W
Gas Type:LPG
Size:1200×870×830mm
Power:16492BTU/h
Weight:70kg



8-Burner Gas Stove
MFGR-8W
Gas Type:LPG
Size:1580×870×830mm
Power:21989BTU/h
Weight:90kg



2-Burner Gas Stove
GB-2
Gas Type:LPG
Size:365×745×385mm
Heat Power:10KW



2-Burner Gas Stove
GB-2
Gas Type:LPG
Size:610×495×385mm
Heat Power:10KW



3-Burner Gas Stove
GB-3
Gas Type:LPG
Size:910×495×385mm
Heat Power:15KW



4-Burner Gas Stove
GB-4
Gas Type:LPG
Size:665×745×385mm
Heat Power:20KW



1-Burner Gas Stove
GBS-1
Gas Type:LPG
Size:380×460×215mm
Heat Power:5KW



2-Burner Gas Stove
GBS-2
Gas Type:LPG
Size:760×460×215mm
Heat Power:10KW



3-Burner Gas Stove
GBS-3G
Gas Type:LPG
Size:990×490×360mm
Heat Power:15KW



4-Burner Gas Stove
GBS-4G
Gas Type:LPG
Size:765×800×360mm
Heat Power:20KW

Kebab Machine



PH-01 (1 Burner)
Gas Type:LPG
Gas pressure: 2800pa
Size:295×300×535mm
Power:2KW
Body Material:201SS
Weight:5.5KG



MFGD-790 (2-Burner)
Voltage:220V/50HZ
Gas Type:LPG
Gas pressure:2800pa
Size:500×650×900mm
Power:9KW/BTU



MFGD-791 (3-Burner)
Voltage:220V/50HZ
Gas Type:LPG
Gas pressure:2800pa
Size:500×650×1050mm
Power:13.5KW/BTU



MFGD-792 (4-Burner)
Voltage:220V/50HZ
Gas Type:LPG
Gas pressure:2800pa
Size:500×650×1200mm
Power:18KW/BTU



PH-02 (2 Burners)
Gas Type:LPG
Gas pressure: 2800pa
Size:295×300×535mm
Power:4KW
Body Material:201SS
Weight:6.5KG



GRB-500
Dimension:550×692×1200mm
Heat Power: 18KW
Motor Voltage:220V/50HZ
N/W:47KG
Body Material:201SS
With safty thermocouple



MZK-890
Electric Shawarma Machihe (3-element)
Size:500×650×900mm
Heat Power:6KW
Motor Voltage:220V/380V
Motor Speed:4.8r/min
Temperature:50~300℃



MZK-891
Electric Shawarma Machihe (4-element)
Size:500×650×1050mm
Heat Power:8KW
Motor Voltage:380V
Motor Speed:4.8r/min
Temperature:50~300℃

Food Steamer



MB-500



MB-600



MB-500S



MB-600S



MB-700S

Model	Voltage	Power	Size	Tray Size	NetWeight	Tray Units
MB-500	110/220V	1.1KW	380x400x750mm	300x310mm	26kg	5 trays
MB-600	110/220V	1.5KW	460x520x830mm	380x420mm	33kg	6 trays
MB-500S	110/220V	1.1KW	460x380x750mm	300x310mm	26kg	5 trays
MB-600S	110/220V	1.5KW	580x460x830mm	380x420mm	35kg	6 trays
MB-700S	110/220V	2.0KW	650x500x910mm	390x490mm	42kg	7 trays

Cotton Candy Machine



MB-520
Voltage:110V / 220V
Size:520×520×505mm
Power:0.98KW
Weight:10.5kg



MCF-5
Voltage:110V 60HZ/ 220V 50HZ
Heating Power:950W
Motor Power:80W
N.W:13KG
G.W:14.5KG
Output:4-6pcs/min
Size:520×520×435mm



MCF-6
Voltage:110V 60HZ/ 220V 50HZ
Heating Power:950W
Motor Power:80W
N.W:13.5KG
G.W:15KG
Output:4-6pcs/min
Size:630×630×435mm



MCF-7
Voltage:110V 60HZ/ 220V 50HZ
Heating Power:950W
Motor Power:80W
N.W:14KG
G.W:15.5KG
Output:4-6pcs/min
Size:740×740×435mm



MFM-01
Voltage:110V / 220V
Size:670×520×1100mm
Power:0.95KW
Weight:18kg



MCF-5B
Voltage:110V 60HZ/ 220V 50HZ
Heating Power:950W
Motor Power:80W
N.W:16KG
G.W:17KG
Output:4-6pcs/min
Size:740×740×435mm



MWY-78 GAS
Gas Type:LPG
Size:500×500×530mm
Weight:14kg



MCF-5G GAS
Voltage:12V(Battery)
Motor Power:80W
N.W:17KG
G.W:18KG
Output:4-6pcs/min
Size:520×520×435mm

Gas BBQ



MVSJ-708 GAS
Gas Type:LPG
Gas pressure:2800pa
Size:630×400×250mm
Burn Value:25Mj



MVSJ-702 GAS
Gas Type:LPG
Gas pressure:2800pa
Size:1070×400×250mm
Burn Value:35Mj



MVSJ-761 GAS
Gas Type:LPG
Gas pressure:2800pa
Size:1140×400×260mm
Burn Value:35Mj



MVSJ-762 GAS
Gas Type:LPG
Gas pressure:2800pa
Size:1140×480×260mm
Burn Value:35Mj



MVDK-735 GAS
Gas Type:LPG
Gas pressure:2800pa
Size:600×400×180mm
Burn Value:15Mj



MVDK-736 GAS
Gas Type:LPG
Gas pressure:2800pa
Size:800×400×180mm
Burn Value:22.5Mj



MVDK-708 GAS
Gas Type:LPG
Gas pressure:2800pa
Size:600×560×180mm
Burn Value:27Mj



MVDK-709 GAS
Gas Type:LPG
Gas pressure:2800pa
Size:800×560×180mm
Burn Value:40.5Mj

Chocolate Fountain



MBL-11



MBL-12



MBL-13



MBL-14



MBL-15



MBL-16

Model	Voltage	Frequency	Power	Dimensions	Weight
MBL-11	110V/220V	50HZ/60HZ	150W	150×240×400mm	3.5KG
MBL-12	110V/220V	50HZ/60HZ	150W	150×240×400mm	3.5KG
MBL-13	110V/220V	50HZ/60HZ	210W	280×280×580mm	6KG
MBL-14	110V/220V	50HZ/60HZ	300W	330×330×680mm	7.5KG
MBL-15	110V/220V	50HZ/60HZ	300W	360×360×820mm	8.5KG
MBL-16	110V/220V	50HZ/60HZ	350W	430×430×1030mm	11.5KG

Hot Chocolate Machine



CH-5L
Voltage:220V/110V 50HZ/60HZ
Size:400×320×450mm
Power:400W
Motor Power:40W
Temp:30-90℃
Capacity:5 L
Weight:8KG



CH-10L
Voltage:220V/110V 50HZ/60HZ
Size:400×320×570mm
Power:500W
Motor Power:40W
Temp:30-90℃
Capacity:10 L
Weight:10KG

Stainless Steel Juice Dispenser



MJD-A1
Dimension:270*350*560mm
Pcaking Size:370*280*610mm
Material:Gilt



MJD-A2
Dimension:570*350*600mm
Pcaking Size:600*370*610mm
Material:Gilt



MJD-A3
Dimension:850*350*600mm
Pcaking Size:905*405*640mm
Material:Gilt



MCD-A
Dimension:270*600mm
Pcaking Size:310*310*490mm
Material:Gilt



MJD-B1
Dimension:270*350*560mm
Pcaking Size:370*280*610mm
Material:Stainless Steel



MJD-B2
Dimension:570*350*600mm
Pcaking Size:600*370*610mm
Material:Stainless Steel



MJD-B3
Dimension:850*350*600mm
Pcaking Size:905*405*640mm
Material:Stainless Steel



MMD-A
Dimension:270*350*560mm
Pcaking Size:370*280*610mm
Material:Stainless Steel

Hot Dog Grill



WY-005
Voltage:110V/220V
Size:590×250×420mm
Power:960W



WY-007
Voltage:110V/220V
Size:590×330×420mm
Power:1330W



WY-007C
Voltage:110V/220V
Size:590×330×420mm
Power:1330W



WY-007D
Voltage:110V/220V
Size:590×330×420mm
Power:1330W
With a door glass & glass cover



WY-30
Voltage:110V/220V
Size:470×300×390mm
Power:700W



WY-104A
Voltage:110V/220V
Size:575×340×465mm
Power:1000W



WY-100
Voltage:110V/220V
Size:340×340×465mm
Power:850W



WY-009
Voltage:110V/220V
Size:280×280×470mm
Power:850W



WHD-5
(Hot dog roller without cover)
Voltage:110V/220V
Size:580×270×180mm
Power:1000W



WHD-7
(Hot dog roller without cover)
Voltage:110V/220V
Size:585×345×180mm
Power:1400W



WHD-9
(Hot dog roller without cover)
Voltage:110V/220V
Size:585×415×180mm
Power:1800W



WHD-11
(Hot dog roller without cover)
Voltage:110V/220V
Size:585×505×180mm
Power:2200W



WHD-5C
(Hot dog roller with cover)
Voltage:110V/220V
Size:580×270×380mm
Power:1000W



WHD-7C
(Hot dog roller with cover)
Voltage:110V/220V
Size:585×345×405mm
Power:1400W



WHD-9C
(Hot dog roller with cover)
Voltage:110V/220V
Size:585×415×405mm
Power:1800W



WHD-11C
(Hot dog roller with cover)
Voltage:110V/220V
Size:585×505×420mm
Power:2200W

Waffle Baker&Cone Baker



MHF-01
Voltage:220V/50HZ
Size:250×430×250mm
Power:1.2KW



MHF-02
Voltage:220V/50HZ
Size:500×430×250mm
Power:2×1.2KW



MXG-01
Voltage:220V/50HZ
Size:250×430×250mm
Power:1.2KW



MXG-02
Voltage:220V/50HZ
Size:500×430×250mm
Power:2×1.2KW

Electric Crepe Maker



ECM-1
Voltage:220V 50HZ
Size:450×490×225mm
Power:3KW



ECM-2
Voltage:220V 50HZ
Size:890×490×225mm
Power:6KW



ECM-11
Voltage:220V 50HZ
Size:450×490×235mm
Power:3KW



ECM-22
Voltage:220V 50HZ
Size:860×490×235mm
Power:6KW

Gas Crepe Maker



GCM-1 GAS
Gas Type:LPG
Size:490×450×260mm
Gas Pressure:2800-3000pa



GCM-2 GAS
Gas Type:LPG
Size:890×490×260mm
Gas Pressure:2800-3000pa



GCM-11 GAS
Gas Type:LPG
Size:450×490×225mm
Gas Pressure:2800-3000pa



GCM-22 GAS
Gas Type:LPG
Size:860×490×235mm
Gas Pressure:2800-3000pa

Quartzose Tube Oven



MHQ-240
Voltage: 220V 50HZ
Power:2.4KW
Size:490×250×280mm



MHQ-360
Voltage: 220V 50HZ
Power:3.6KW
Size:490×250×380mm

Hamburger Maker



MHB-05
Voltage:220V/50HZ
Power:2.2KW
Dimension:410X700X300mm
Germany EGO Thermostat

Contact Grill



MB-811
Voltage:220V/50HZ
Size:370×305×210mm
Power:1.8KW



MB-811E
Voltage:220V/50HZ
Size:410×305×210mm
Power:2.2KW



MB-813
Voltage:220V/50HZ
Size:570×305×210mm
Power:3.6KW



MB-815
Voltage:220V/50HZ
Size:370×450×210mm
Power:2.5KW



MVEG-881A
Voltage:220V/50HZ
Size:450×320×250mm
Power:1.83KW



MVEG-881B
Voltage:220V/50HZ
Size:450×440×250mm
Power:2.38KW



MVEG-882A
Voltage:220V/50HZ
Size:580×450×250mm
Power:3.66KW



MVEG-882B
Voltage:220V/50HZ
Size:600×430×250mm
Power:3.66KW

Bread Toaster



METT-150
Voltage:220V 50HZ
Size:288×418×387mm
Power:1.5KW
Capacity:150-180 pcs/H



4-Slice Toaster

MET-4
Voltage:220V 50HZ
Size:290×260×220mm
Power:1.8KW



METT-300
Voltage:220V 50HZ
Size:368×418×387mm
Power:2.45KW
Capacity:300-350 pcs/H



6-Slice Toaster

MET-6
Voltage:220V 50HZ
Size:420×260×220mm
Power:2.5KW



METT-450
Voltage:220V 50HZ
Size:468×418×387mm
Power:2.6KW
Capacity:450-500 pcs/H



9-Slice Toaster

MFY-9
Voltage:220V/50HZ
Size:500×350×270mm
Power:2.2KW
Weight:14kg

Rotary Square Waffle Baker



HFF-01
Voltage:220V/50HZ
Size:430×260×290mm
Power:1.2KW
Weight:10KG



HFX-11
Voltage:220V/50HZ
Size:430×520×290mm
Power:2.2KW
Weight:18KG



HFF-02
Voltage:220V/50HZ
Size:430×520×290mm
Power:2.2KW
Weight:17.5KG



MWB-1
Voltage:220V/50HZ
Size:300×380×250mm
Power:1.6KW
Weight:11.6KG



MWB-2
Voltage:220V/50HZ
Size:630×380×250mm
Power:3.2KW
Weight:20.5KG

Cup Sealing Machine



NEW
Automatic

WY-680
Voltage:220V/50HZ
Power:0.7KW
Dimension:35×35×50cm
N.W:14.5KG



WY-808
Manual Sealing Machine(for bowl)
Voltage:220V/50HZ
Size:370×530×590mm
Power:0.7KW
Diameter of sealing bowl 140/150/170mm



WY-862
Semi-auto Sealing Machine
Voltage:220V/50HZ
Size:310×440×590mm
Power:0.3KW



WY-802D
Manual Sealing Machine
Voltage:220V/50HZ
Size:270×270×590mm
Power:0.27KW



WY-802E
Manual Sealing Machine
Voltage:220V/50HZ
Size:270×270×590mm
Power:0.27KW



WY-802F
Manual Sealing Machine
Voltage:220V/50HZ
Size:270×270×650mm
Power:0.27KW



WY-802H
Manual Sealing Machine
Voltage:220V/50HZ
Size:270×270×650mm
Power:0.27KW
Counter can calculate the sealing times

Rotary Rotisseries(Electric&Gas)

- ▶ Saving 30% roasting time by special design burner
- ▶ With powerful motor to keep chicken turning
- ▶ Removable fat collection tray
- ▶ Strong Stainless steel body
- ▶ Internal light provides clear view of food
- ▶ Removable strong skewer, 4-5 chickens per skewer
- ▶ Special design fat dropping system
- ▶ Independent control on each floor
- ▶ Magnetic strengthened tempered glass door
- ▶ Safety protection device



MFEJ-3P(3-Rod)
Voltage:380V/50HZ
Size:1180x490x710mm
Power:6KW
Temperature:50-300°C
Maximum Capacity:15pcs
Weight:50kg



MFEJ-6P(6-Rod)
Voltage:380V/50HZ
Size:1180x490x1250mm
Power:12.3KW
Temperature:50-300°C
Maximum Capacity:30pcs
Weight:75kg



MFEJ-9P(9-Rod)
Voltage:380V/50HZ
Size:1180x490x1780mm
Power:18.4KW
Temperature:50-300°C
Maximum Capacity:30pcs
Weight:105kg

MFGJ-3P(3-Rod) GAS
Voltage:220V/50HZ
Gas Type:LPG
Gas pressure:2800pa
Size:1180x490x710mm
Power:10KW/BTU
Maximum Capacity:15pcs
Weight:60kg

MFGJ-6P(6-Rod) GAS
Voltage:220V/50HZ
Gas Type:LPG
Gas pressure:2800pa
Size:1180x490x1250mm
Power:20KW/BTU
Maximum Capacity:30pcs
Weight:85kg

MFGJ-9P(9-Rod) GAS
Voltage:220V/50HZ
Gas Type:LPG
Gas pressure:2800pa
Size:1180x490x1780mm
Power:20KW/BTU
Maximum Capacity:30pcs
Weight:115kg



MFXD-206-2
Voltage:380V/50HZ
Size:1340x550x1570mm
Power:14KW
Temperature:50-300°C
Maximum Capacity:24~48pcs of chickens
Weight:115kg

MFXD-207-2 GAS
Voltage:220V/50HZ
Gas Type:LPG
Gas pressure:2800pa
Size:1340x550x1570mm
Power:18KW/BTU
Maximum Capacity:24~48pcs of chickens
Weight:60kg



MVXK-835
Voltage:220V/50HZ
Size:670x620x1500mm
Power:7.3KW
Temperature:50-300°C

MVXK-726 GAS
Voltage:220V/50HZ
Gas Type:LPG
Gas pressure:2800pa
Size:670x620x1500mm
Power:11KW



MVR-206
Voltage:220V/50HZ
Size:670x550x1580mm
Power:7.2KW
Temperature:50-300°C

MVR-206V GAS
Voltage:220V/50HZ
Gas Type:LPG
Gas pressure:2800pa
Size:670x550x1580mm
Power:9KW

Salamander



MEH-450
Voltage : 220V 50HZ
Size:450x480x500mm
Power:2.8KW



MEH-600
Voltage : 220V 50HZ
Size:600x480x520mm
Power:4KW



MEH-800
Voltage : 220V 50HZ
Size:800x480x520mm
Power:5.6KW



MEH-936
Voltage : 220V 50HZ
Size:610x340x280mm
Power:2KW



MEH-937
Voltage : 220V 50HZ
Size:800x450x470mm
Power:4KW



MEH-938
Voltage : 220V 50HZ
Size:580x390x390mm
Power:2.2KW

Electric Conveyor Pizza Oven



12"

Model	MVPS-8A
Dimension	1500x600x430mm
Power	5.8kw
Voltage	220V/50HZ
N/W	45kg
Packing size	1180x630x380mm



18"

Model	MVPS-8B
Dimension	2080x760x430mm
Power	7.7kw
Voltage	380V/50HZ
N/W	72kg
Packing size	1630x780x380mm



12"

Model	MFEP-12
Dimension	1100x570x370mm
Power	6.7kw
Voltage	220-240V/50HZ
Work area	380x1000mm
Temp	50-350°C
N/W	45kg



18"

Model	MFEP-18
Dimension	1560x750x370mm
Power	10.3kw
Voltage	380V/50HZ
Work area	530x1450mm
Temp	50-350°C
N/W	65kg



32"

Model	MFEP-32
Dimension	2500x1070x460mm
Power	25.5kw
Voltage	380V/50HZ
Work area	880x1800mm
Temp	50-350°C
N/W	85kg

Gas Conveyor Pizza Oven



Model	MHGP-12	MHGP-18	MHGP-32
Dimension	1120×570×430mm	1560×750×430mm	2200×1060×430mm
Power	0.1KW	0.1KW	0.2KW
Voltage	220V 50HZ	220V 50HZ	220V 50HZ
Work area	350×1000mm	350×1450mm	850×1800mm
N/W	100KG	160KG	220KG

Electric Pizza Oven



MEPZ-2M



MEPZ-2/218



MEPZ-418

Model	Voltage	Frequency	Power	Capacity	Dimensions	Chamber(mm)
MEPZ-2M	220-240V	50HZ	1.8Kw	12" pizza×2pcs	480×470×360mm	330×330×100×2pcs
MEPZ-2	220-240V	50HZ	2.4Kw	12" pizza×2pcs	585×570×430mm	400×400×115×2pcs
MEPZ-218	220-240V	50HZ	3Kw	18" pizza×2pcs	685×675×430mm	500×500×115×2pcs
MEPZ-418	220-240V	50HZ	6Kw	18" pizza×4pcs	1180×675×970mm	1000×500×115×2pcs



MEPZ-4/6



MEPZ-8/12



Pizza oven with shelf (MEPZ-4/6/8/12)

Model	Voltage	Frequency	Power	Capacity	Dimensions	Chamber(mm)
MEPZ-4	220-240V	50HZ	4.5Kw	12" pizza×4pcs	975×945×415mm	660×660×135
MEPZ-6	220-240V	50HZ	6.9Kw	12" pizza×6pcs	585×1230×415mm	660×990×135
MEPZ-8	220-240V	50HZ	9Kw	12" pizza×8pcs	685×945×745mm	660×660×135×2pcs
MEPZ-12	220-240V	50HZ	13.8Kw	12" pizza×12pcs	975×1230×745mm	660×990×135×2pcs

Electric Pizza Oven

Features:

- 1 Quick temperature rising, uniform temperature in baker and high heat efficiency.
2. Base plate of health is made of stone and heated uniformly.
3. Baker temperature is 50°C~350°C, separate bottom fire and automatic constant temperature.
4. Set timing alarm function.
5. Made of high quality stainless steel plate with long span of life.



PD-11A



PD-14A



PD-14B



PD-28B

Model	Voltage	Frequency	Power	Capacity	Temperature Range	Dimensions
PD-11A	110V/220V	50HZ/60HZ	2.2Kw	12" pizza×1pcs	50°C~350°C	610×625×300mm
PD-14A	110V/220V	50HZ/60HZ	4.2Kw	12" pizza×4pcs	50°C~350°C	870×830×390mm
PD-14B	110V/220V	50HZ/60HZ	4.2Kw	12" pizza×4pcs	50°C~350°C	962×867×440mm
PD-28B	110V/220V	50HZ/60HZ	8.4Kw	12" pizza×8pcs	50°C~350°C	962×867×768mm

Electric Pizza Oven



PD-13C



PD-14C



PD-16C

Model	Voltage	Frequency	Power	Capacity	Temperature Range	Dimensions
PD-13C	110V/220V	50HZ/60HZ	4.8Kw	12" pizza×3pcs	50°C~400°C	1285×650×440mm
PD-14C	110V/220V	50HZ/60HZ	4.8Kw	12" pizza×4pcs	50°C~400°C	968×875×440mm
PD-16C	380V	50HZ/60HZ	7.2Kw	12" pizza×6pcs	50°C~400°C	1285×875×440mm

Donut Machine



MT-100



MT-101



MT-102



MT-103



MT-104

Model	Voltage	Frequency	Power	Capacity	Donut Size	Dimensions
MT-100	110V/220V	50HZ/60HZ	6Kw	300~1200pcs/h	3-10mm	1200×550×720mm
MT-101	110V/220V	50HZ/60HZ	3Kw	450pcs/h	3-10mm	1030×400×650mm
MT-102	LPG2800	LPG2800	6Kw	300~1200pcs/h	3-10mm	1050×650×850mm
MT-103	110V/220V	50HZ/60HZ	3Kw	300pcs/h	3-10mm	1050×900×1400mm
MT-104	110V/220V	50HZ/60HZ	3Kw	300pcs/h	3-10mm	1050×750×650mm

Luxury Combi-Steamer

Seven Superiority:

- ▶ Standardized: whoever the chef is across the country, the cuisine quality is consistent.
- ▶ Mass: mass production for a single use, satisfy the grand banquet.
- ▶ Multi-functional: one machine instead of more models, integrated the conventional functions like steaming, roasting, baking, braising and frying etc..
- ▶ Manpower saving: free the manpower during automatic cooking process.
- ▶ Time saving: with sufficient firepower.
- ▶ Space saving: 1 m², can be located everywhere.
- ▶ Professional chef team for Chinese cuisine: provide comprehensive R&D service of Chinese cuisine.



MCS-423 MCS-523 MCS-611 MCS-612 MCS-613

Features:

- ▶ Four common modes, achieving various cookings (e.g. steaming, roasting, braising, baking and frying etc.) in Chinese cuisine comprehensively.
- ▶ Fully computer-controlled touch screen, with visible control, making the steps clear at a glance.
- ▶ 360° hot-air convection, uniform in heating, ensuring the food color and luster.
- ▶ Food probe mode, supervising and controlling the inner temperature of food.
- ▶ Equipped with integrated boiler, which can produce powerful steam, freely to cook.
- ▶ With dehumidification function, which can eliminate the steam produced during baking by force to ensure the baking effect.
- ▶ Shelf mode, controlling the cook time of every rack independently, can cook various dishes simultaneously without being tainted by other odor.
- ▶ Smart temperature control, maintaining the set temperature and chamber temperature within ±59°C to make the temperature control more precise and guarantee the cooking effect.
- ▶ D-value cooking: low temperature slow cooking, making food more fresh and tender. Appointed cook: can perform timing cooking. convenient and free.
- ▶ Multi-power selection (1, 1/3, 2/3), energy saving.
- ▶ Automatic cleaning and delime function of boiler, with periodical reminder, can prevent incrustation efficiently and extend the service life of the device.
- ▶ Auto-cleaning function, convenient and simple, saving manpower.
- ▶ Advanced door-opening, preventing injuries caused by sudden gush of steam.
- ▶ Multiple cleaning programs for your choice, meeting various demands.

Model	Voltage	Power	Bore Size(L/H/D)	Dimension	Tray Units	Capacity	Height(per tray)
MCS-423	110V /220V	4.6KW	390x380x370mm	502x643x620mm	4 trays	4 GN2 /3" Pots	32 mm
MCS-523	110V /220V	3.2KW	420x420x550mm	635x650x710mm	5 trays	5 levels of GN2/3	42 mm
MCS-611	380V 50Hz	12.5KW	440x650x558mm	910x810x900mm	6 trays	6 GN1/1*1' Pots	70 mm
MCS-612	380V 50Hz	12.5KW	460x645x650mm	910x820x900mm	6 trays	6 GN1/1*1' Pots	70 mm
MCS-613	380V 50Hz	12KW	438x646x558mm	910x820x900mm	6 trays	6 GN1/1*1' Pots	70 mm

Common Electric Oven



MYCD-3-6D



MYCD-2D



MYCD-2-4D



MYCD-3-9D

Model	MYCD-2D
Specification	2TRAYS
Power Supply	7KW
Voltage	220V/380V
Net Weight	80kg
Size	1210x810x520mm
Model	MYCD-2-4D
Specification	4TRAYS
Power Supply	14KW
Voltage	380V
Net Weight	170kg
Size	1210x810x1280mm
Model	MYCD-2-4D
Specification	6TRAYS
Power Supply	21KW
Voltage	380V
Net Weight	250kg
Size	1210x810x1500mm
Model	MYCD-3-9D
Specification	9TRAYS
Power Supply	23KW
Voltage	380V
Net Weight	250kg
Size	1665x810x1500mm

Standard Electric Oven

Model	MYCD-2D1
Specification	2TRAYS
Power Supply	7KW
Voltage	220V/380V
Net Weight	80kg
Size	1210x810x520mm
Model	MYCD-2-4D1
Specification	4TRAYS
Power Supply	14KW
Voltage	380V
Net Weight	170kg
Size	1210x810x1260mm
Model	MYCD-3-6D1
Specification	6TRAYS
Power Supply	21KW
Voltage	380V
Net Weight	250kg
Size	1210x810x1500mm
Model	MYCD-3-9D1
Specification	9TRAYS
Power Supply	23KW
Voltage	380V
Net Weight	350kg
Size	1605x810x1500mm



MYCD-2D1



MYCD-2-4D1



MYCD-3-9D1



MYCD-3-6D1

Common Gas Oven



MYCQ-3-6D



MYCQ-2D



MYCQ-2-4D



MYCQ-3-9D

Model	MYCQ-2D
Specification	2TRAYS
Power Supply	0.1KW
Voltage	220V
Net Weight	139kg
Size	1330x895x690mm

Model	MYCQ-2-4D
Specification	4TRAYS
Power Supply	0.2KW
Voltage	220V
Net Weight	250kg
Size	1330x895x1400mm

Model	MYCQ-3-6D
Specification	6TRAYS
Power Supply	0.3KW
Voltage	220V
Net Weight	410kg
Size	1330x895x1735mm

Model	MYCQ-3-9D
Specification	9TRAYS
Power Supply	0.4KW
Voltage	220V
Net Weight	500kg
Size	1755x895x1735mm

Standard Gas Oven

Model	MYCQ-2D1
Specification	2TRAYS
Power Supply	0.1KW
Voltage	220V
Net Weight	135kg
Size	1330x895x690mm



MYCQ-2D1

Model	MYCQ-2-4D1
Specification	4TRAYS
Power Supply	0.2KW
Voltage	220V
Net Weight	280kg
Size	1330x895x1400mm



MYCQ-2-4D1

Model	MYCQ-3-6D1
Specification	6TRAYS
Power Supply	0.3KW
Voltage	220V
Net Weight	410kg
Size	1330x895x1735mm



MYCQ-3-6D1

Model	MYCQ-3-9D1
Specification	9TRAYS
Power Supply	0.4KW
Voltage	220V
Net Weight	500kg
Size	1755x895x1735mm



MYCQ-3-9D1

Electric Baking Oven



MWFC-101D



MWFC-102D



MWFC-204D



MWFC-306D



MWFC-309D

Model	Voltage	Frequency	Power	Capacity	Dimensions	Net Weight	Gross Weight
MWFC-101D	220V	50HZ	4.4Kw	1 Layer with 1 Tray	915×700×400mm	20kg	25kg
MWFC-102D	220/380V	50HZ	6.6Kw	1 Layer with 2 Trays	1215×850×580mm	55kg	60kg
MWFC-204D	380V	50HZ	13.2Kw	2 Layers with 4 Trays	1215×850×1230mm	120kg	130kg
MWFC-306D	380V	50HZ	19.8Kw	3 Layers with 6 Trays	1215×850×1645mm	150kg	160kg
MWFC-309D	380V	50HZ	24Kw	3 Layers with 9 Trays	1640×850×1645mm	180kg	190kg

Gas Baking Oven



MWFC-101Q



MWFC-102Q



MWFC-204Q



MWFC-306Q



MWFC-309QD

Model	Voltage	Frequency	Gas	Capacity	Dimensions	Net Weight	Gross Weight
MWFC-101Q	220V	50HZ	LPG	1 Layer with 1 Tray	1000×760×580mm	80kg	85kg
MWFC-102Q	220V	50HZ	LPG	1 Layer with 2 Trays	1340×920×670mm	135kg	140kg
MWFC-204Q	220V	50HZ	LPG	2 Layers with 4 Trays	1340×920×1278mm	160kg	170kg
MWFC-306Q	220V	50HZ	LPG	3 Layers with 6 Trays	1340×920×1750mm	320kg	330kg
MWFC-309Q	220V	50HZ	LPG	3 Layers with 9 Trays	1760×920×1750mm	410kg	420kg

Luxury Baking Oven With Proofer



MWFC-102E



MWFC-204E



MWFC-102G



MWFC-204G

Model	Voltage	Frequency	Capacity	Dimensions	Packing Size
MWFC-102E	220V	50HZ	1 Layer with 2 Trays, 10 Pans	1215×850×1480mm	1265×900×1520mm
MWFC-204E	380V	50HZ	2 Layers with 4 Trays, 10 Pans	1215×850×2030mm	1265×900×2080mm
MWFC-102G	220V	50HZ	1 Layer with 2 Trays, 10 Pans	1215×850×1560mm	1265×900×1620mm
MWFC-204G	220V	50HZ	2 Layers with 4 Trays, 10 Pans	1215×850×2080mm	1265×900×2130mm

Spray Proofer(Economic)



MWFF-13A MWFF-16A MWFF-26A MWFF-32A

Model	Voltage	Power	Specification	Temp Range	Tray Size	Dimension	Packing Size	Net Weight
MWFF-13A	220V50Hz	2.1KW	13-tray	0~60°C	600×400mm	690×480×1620mm	740×530×1640mm	28kg
MWFF-16A	220V50Hz	2.1KW	16-tray	0~60°C	600×400mm	690×480×1930mm	740×530×1950mm	32kg
MWFF-26A	220V50Hz	2.8KW	26-tray	0~60°C	600×400mm	1000×690×1620mm	1050×740×1640mm	44kg
MWFF-32A	220V50Hz	2.8KW	32-tray	0~60°C	600×400mm	1000×690×1930mm	1050×740×1950mm	50kg

Spray Proofer(Luxury)

Perfect fermenting effect, the best choice of school, bakery shop, cake shop. Hot air convection, evenly temperature and humidity inside, good fermenting. Humanization door, glass visual window. Stainless steel shelf, clean and durable, never rust. Big capacity, multilayer design, beautiful handle comfortable for your using every time. Classic knob control key, it is convenient for operation.



MWFF-13B MWFF-16B MWFF-26B MWFF-32B

Model	Voltage	Power	Specification	Temp Range	Tray Size	Dimension	Packing Size	Net Weight
MWFF-13B	220V50Hz	2.1KW	13-tray	0~60°C	600×400mm	690×480×1700mm	740×530×1680mm	36kg
MWFF-16B	220V50Hz	2.1KW	16-tray	0~60°C	600×400mm	690×480×2000mm	740×530×1950mm	40kg
MWFF-26B	220V50Hz	2.8KW	26-tray	0~60°C	600×400mm	1000×690×1700mm	1050×740×1680mm	60kg
MWFF-32B	220V50Hz	2.8KW	32-tray	0~60°C	600×400mm	1050×740×1980mm	1050×740×1980mm	65kg

Rotary Convection Oven




MZ-32D/32Q

- ▶ Hygienic stainless steel construction for easy of cleaning and durability.
- ▶ Outside body SS #430, 1.5mm thickness. Chamber SS #430, 2.0mm thickness. Thick material used for secure
- ▶ Durability of oven, especially for the chamber where hot air comes in and goes out from.
- ▶ Burning chamber radiating pipes: SS #316, 11 units.
- ▶ Burning chamber: SS#304, 2.0mm thick.
- ▶ Heavy duty oven structure with 6mm thickness of rotating plate.




MZ-16C/16D/16Q

MZ-16Q Gas heated 
 16Trays
 380V, 50Hz, 3 phase, 3.1kW
 Size: 1280×2280×2450mm
 Weight: 1480 kg
 Japanese Burner, Olympia
 2 units of free trolley

MZ-16C Diesel heated
 16Trays
 380V, 50Hz, 3 phase, 3.1kW
 Size: 1280×2280×2450mm
 Weight: 1480 kg
 Japanese Burner, Olympia
 2 units of free trolley

MZ-16D Electric heated
 16Trays
 380V, 50Hz, 3 phase, 35kW
 Dimension: 1280×2280×2450mm
 Weight: 1480 kg
 2 units of free trolley

MZ-32Q Gas heated 
 32Trays
 380V, 50Hz, 3 phase, 3.5kW
 Size: 1820×2600×2450mm
 Weight: 1980 kg
 Japanese Burner, Olympia
 2 units of free trolley

MZ-32C Diesel heated
 32Trays
 380V, 50Hz, 3 phase, 3.5kW
 Size: 1820×2600×2450mm
 Weight: 1980 kg
 Japanese Burner, Olympia
 2 units of free trolley

MZ-32D Electric heated
 32Trays
 380V, 50Hz, 3 phase, 55kW
 Size: 1660×2600×2450mm
 Weight: 1980 kg
 2 units of free trolley

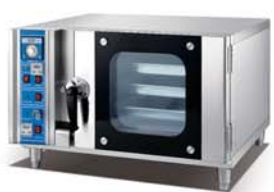


MZ-32C

SPECIFICATION

- ▶ 6 A-levels quality assurance
- ▶ A-level energy-saving and environment protection. A-level capacity. A-level low-noise. A-level smooth operation. A-level stable quality.
- ▶ Fashionable automatically controlled panel presents a noble oven body.
- ▶ Electronically displaying baking date makes everything under-control.
- ▶ Well-selected materials, our oven embodies fashion & elegant, durable & lasting, clean & healthy characteristic.
- ▶ Craft glass windows provide high transparency making baking situation Vividly.
- ▶ Big volume, large baking capacity. It is easy for one person to finish heavy Workloads.

MHEA Convection Oven(Electric)



MHEA-3
Dimension:930×890×670mm
Voltage:220V 50HZ
Power:4.4KW
Inner Size:700×500×340mm



MHEA-5
Dimension:930×890×830mm
Voltage:380V 50HZ
Power:7.4KW
Inner Size:700×500×500mm

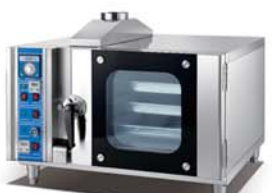


MHEA-8
Dimension:930×890×1100mm
Voltage:380V 50HZ
Power:9.4KW
Inner Size:700×500×775mm



MHEA-12
Dimension:930×890×1550mm
Voltage:380V 50HZ
Power:12.8KW
Inner Size:700×500×1225mm

MHGA Convection Oven(Gas)



MHGA-3 GAS
Dimension:850×1170×650mm
Voltage:380V/50HZ
Power:0.3Kw
Heat Flux:5Kw/h
Inner Size:500×700×300mm



MHGA-5 GAS
Dimension:850×1170×700mm
Voltage:380V/50HZ
Power:0.6Kw
Heat Flux:8Kw/h
Inner Size:500×700×500mm



MHGA-8 GAS
Dimension:850×1170×1170mm
Voltage:380V/50HZ
Power:0.6Kw
Heat Flux:10Kw/h
Inner Size:500×700×800mm



MHGA-12 GAS
Dimension:850×1170×1630mm
Voltage:380V/50HZ
Power:1Kw
Heat Flux:15Kw/h
Inner Size:500×700×1100mm

Electric Convection Oven

Features

1. Make of stainless steel with high quality. Compact structure and appearance. Up to safety and sanitation standard completely.
2. Hot Wind and circulation system was equipped, bake more averagely.
3. High thermal efficiency owe to the high efficiency heater. The temperature rises rapidly.
4. Double layers heat-resistant glass door was used and it is clear at a glance.



MHEO-6
Dimension:680×680×600mm
Voltage:220V 50HZ
Temperature Range:20℃~300℃
Power:3.2KW
Tray Size:371×403×100mm



MHEO-8
Voltage:220V/50Hz
Size:840×680×600mm
Temperature Range:20℃~300℃
Power:6.4Kw
Inner Size:700×460×370mm
Tray Size:400×600×20mm



MDH4B-B
Voltage:110V/220V
Power:2.4KW
Temperature Range:20℃~300℃
Dimension:600X650X556mm
Capacity:4 trays
Tray Size:320×435×100mm



MDH4A-B
Voltage:110V/220V
Power:4.7KW
Temperature Range:20℃~300℃
Dimension:796X703X590mm
Capacity:4 trays
Tray Size:400×600×100mm

MEH/MQH Convection Oven(Gas and Electric)

Luxurious outlook. The electric power type using high quality motor, which is better saving energy than common type. The gas type made with heating pipe and heating exchanger, made with high quality and extra-thick insulation material. The two models both have microcomputer control panel, many functions can be adjusted. Automatic temperature control system, which make the baking environment under the best. Inner with rotary heating fan, making the temperature uniform. Double control systems of surface and bottom, can suppling the best baking environment. The biggest feature of the hot blast stove is that there is only one kind of temperature in the body, and the heat of the heating tube is transmitted through the motor to each place of the inner. compared to conventional furnaces, it saves electricity, space, time. The liner height is 11cm. The distance can be fine-tuned for more uniform heat transfer. With steam device, can dry fruit.



MEH-5D/MQH-5D



MEH-8D/MQH-8D



MEH-10D/MQH-10D



MEH-5DL/MQH-5DL GAS



MEH-8DL/MQH-8DL GAS



MEH-10DL/MQH-10DL GAS

Model	Voltage	Power	Inner Size	Dimension	Tray Units
MEH-5D	380V	7.5KW	420x610x600mm	905x1280x955mm	5 trays
MEH-8D	380V	15KW	420x610x920mm	905x1280x1280mm	8 trays
MEH-10D	380V	15KW	420x610x1145mm	905x1280x1520mm	10 trays
MQH-5D	110/220V		420x610x600mm	905x1450x955mm	5 trays
MQH-8D	110/220V		420x610x920mm	905x1450x1280mm	8 trays
MQH-10D	110/220V		420x610x1145mm	905x1450x1520mm	10 trays
MEH-5DL	380V	7.5KW	420x610x600mm	905x1280x955mm	5 trays
MEH-8DL	380V	15KW	420x610x920mm	905x1280x1280mm	8 trays
MEH-10DL	380V	15KW	420x610x1145mm	905x1280x1520mm	10 trays
MQH-5DL	110/220V		420x610x600mm	905x1450x955mm	5 trays
MQH-8DL	110/220V		420x610x920mm	905x1450x1280mm	8 trays
MQH-10DL	110/220V		420x610x1145mm	905x1450x1520mm	10 trays

USA Style Hot Air Convection Oven (Electric)

Luxurious outlook. The power type using high quality motor, which is better to save energy than common type. Models both have microcomputer control pannel, many functions can be adjusted. Automatic temperature control system, which make the baking environment under the best. Inner with rotately heating fan, making the temperature uniform. Double control systems of surface and bottom, can suppling the best baking enviroment.



MEH-5U

MEH-8U

MEH-10U

Model	Voltage	Power	Dimension	Tray Units
MEH-5U	380V	7KW	980x1080x850mm	5 trays
MEH-8U	380V	14KW	980x1080x1090mm	8 trays
MEH-10U	380V	14KW	980x1080x1330mm	10 trays

Luxury Fermenting Cabinet



MFC-18/MFC-36

MFC-36L2

Use of advanced microcomputer temperature controller, control the temperature and humidity.Environmental foam technology, excellent refrigeration proofing system, automatic micro-computer touch-control panel, digital display accurately reflect the fermentation chamber temperature, temperature chronograph function. Hot air circulation inside the technical means to keep the temperature and humidity environment more uniform, adjust the temperature and humidity are more accurate. Humane sliding doors,easily switch, window glass, instant control of fermentation condition.

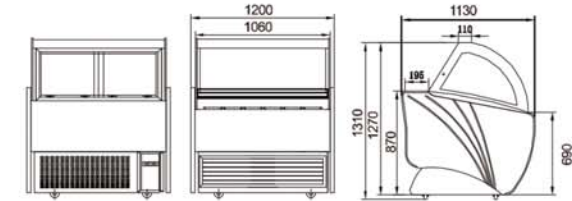
Model	Voltage	Power	Temperature	Tray Size	Capacity	Dimension
MFC-18	110V /220V	1.6KW	0~-5°C	400x600mm	18 trays & single door	590x1020x1800mm
MFC-36	110V /220V	1.8KW	0~-5°C	400x600mm	36 trays & single door	780x1220x2100mm
MFC-36L2	110V /220V	2.2KW	0~-5°C	400x600mm	36 trays & double doors	780x1220x2100mm
MFC-18F	110V /220V	1.6KW	0~-20°C	400x600mm	18 trays & single door	590x1020x1800mm
MFC-36F	110V /220V	1.8KW	0~-20°C	400x600mm	36 trays & single door	780x1220x2100mm
MFC-36L2F	110V /220V	2.2KW	0~-20°C	400x600mm	36 trays & double doors	780x1220x2100mm

Ice Cream Showcase

-15°C~-20°C



MTK-6/8/10/12/14/16/18/20/22/24



Model	Voltage	Power	Compressor	Dimension	Pan Qty	Net Weight
MTK-6	220V/50HZ	600W	Danfoss	600x900x1350mm	6pcs	140KG
MTK-8	220V/50HZ	700W	Danfoss	800x900x1350mm	8pcs	160KG
MTK-10	220V/50HZ	700W	Danfoss	1000x900x1350mm	10pcs	200KG
MTK-12	220V/50HZ	750W	Danfoss	1200x900x1350mm	12pcs	220KG
MTK-14	220V/50HZ	800W	Danfoss	1400x900x1350mm	14pcs	240KG
MTK-16	220V/50HZ	850W	Danfoss	1600x900x1350mm	16pcs	250KG
MTK-18	220V/50HZ	900W	Danfoss	1800x900x1350mm	18pcs	260KG
MTK-20	220V/50HZ	900W	Danfoss	2000x900x1350mm	20pcs	270KG
MTK-22	220V/50HZ	1000W	Danfoss	2200x900x1350mm	22pcs	280KG
MTK-24	220V/50HZ	1000W	Danfoss	2400x900x1350mm	24pcs	300KG

Professional Touchless Stationary Vacuum



- ▶ Touchless stationary vacuum functions as an electric dustpan
- ▶ Cyclonic action for efficient operation; dual HEPA filtration
- ▶ Infrared sensors detect dirt, dust, hair, and debris; automatic shut-off
- ▶ Simple control switch for manual on/off option; bagless design
- ▶ Measures 13 by 7-1/2 by 20-1/2 inches; 1-year limited warranty



Simple to Use
1400 Watt Vacuum
removes 100% of Dust,
Hair & Debris Instantly!



Ideal for Pet Owners
Cyclonic Vacuum Action
with Dual Filtration (HEPA)
provides a Clean Floor
& Clean Air!



Perfect for Salons
Always On & Always Ready
Infrared Sensors activate
Eye-Vac Automatically!

Voltage:220V 50HZ/110V 60HZ
Power:1400W
Canister Volume: 6.2 Liters
Product Dimensions: 13"x7.5"x20.5"
US Patents: 6,671,924/7,096,532
and other US and Foreign Patents Pending

Vertical Stainless Steel Freezer



0.8LG1

Unit Size:760×780×2050mm
Internal Size:640×630×1470mm
Packing Size:860×880×2200mm
Capacity:590L
Cabinet Temperature:0~10°C / -5~-18°C
Cooling Type:Fan cooling or Static
Power:390W/490W
Voltage:220V/50HZ
Refrigerant:R134a/R404
Net Weight:108kg



0.8LG2

Unit Size:760×780×2050mm
Internal Size:640×630×1470mm
Packing Size:860×880×2200mm
Capacity:590L
Cabinet Temperature:0~10°C / -5~-18°C
Cooling Type:Fan cooling or Static
Power:390W/490W
Voltage:220V/50HZ
Refrigerant:R134a/R404
Door Material:stainless steel or glass
Net Weight:108kg



1.0LG2

Unit Size:1200×780×2050mm
Internal Size:1100×630×1470mm
Packing Size:1320×880×2200mm
Capacity:1020L
Cabinet Temperature:0~10°C / -5~-18°C
Cooling Type:Fan cooling or Static
Power:420W/620W
Voltage:220V/50HZ
Refrigerant:R134a/R404
Net Weight:161kg



1.0LG4

Unit Size:1200×780×2050mm
Internal Size:1100×630×1470mm
Packing Size:1320×880×2200mm
Capacity:1020L
Cabinet Temperature:0~10°C / -5~-18°C
Cooling Type:Fan cooling or Static
Power:420W/620W
Voltage:220V/50HZ
Refrigerant:R134a/R404
Door Material:stainless steel or glass
Net Weight:161kg



1.5LG2(double temp double compressor)

Unit Size:1450×780×2050mm
Internal Size:1280×630×1470mm
Packing Size:1550×880×2200mm
Capacity:1200L
Cabinet Temperature:0~10°C / -5~-18°C
Cooling Type:Fan cooling or Static
Power:550W/760W
Voltage:220V/50HZ
Refrigerant:R134a/R404
Door Material:stainless steel or glass
Net Weight:198kg



1.5LG4(double temp double compressor)

Unit Size:1450×780×2050mm
Internal Size:1280×630×1470mm
Packing Size:1550×880×2200mm
Capacity:1200L
Cabinet Temperature:0~10°C / -5~-18°C
Cooling Type:Fan cooling or Static
Power:550W/760W
Voltage:220V/50HZ
Refrigerant:R134a/R404
Door Material:stainless steel or glass
Net Weight:198kg



1.6LG3

Unit Size:1845×780×2050mm
Internal Size:1725×630×1470mm
Packing Size:1940×880×2200mm
Capacity:1590L
Cabinet Temperature:0~10°C / -5~-18°C
Cooling Type:Fan cooling or Static
Power:590W/1000W
Voltage:220V/50HZ
Refrigerant:R134a/R404
Door Material:stainless steel or glass
Net Weight:250kg



1.6LG6

Unit Size:1845×780×2050mm
Internal Size:1725×630×1470mm
Packing Size:1945×880×2200mm
Capacity:1590L
Cabinet Temperature:0~10°C / -5~-18°C
Cooling Type:Fan cooling or Static
Power:590W/1000W
Voltage:220V/50HZ
Refrigerant:R134a/R404
Door Material:stainless steel or glass
Net Weight:250kg

Freezing Working Bench



0.25L2/0.4L2



TGL1.8L2



TGL1.5L2A

Model	Voltage	Power	Temperature	Cooling Type	Unit Size(mm)	Internal Size(mm)	Capacity	Refrigerant	Weight
0.25L2	220V/50HZ	0.18Kw	0~10°C	Static	1500×600×800(+150)	970×420×560	230L	R134a/404	101kg
0.4L2	220V/50HZ	0.215Kw	0~10°C	Static	1800×600×800(+150)	1220×570×560	390L	R134a/404	132kg
TGL1.8L2	220V/50HZ	0.34Kw	0~10°C	Static	1800×760×810	1320×580×560	429L	R134a/404	116kg
TGL1.5L2A	220V/50HZ	0.305Kw	0~10°C	Static	1500×760×810	1020×580×560	332L	R134a/404	101kg



TG1.5L2



TG24L3



KT2

Model	Voltage	Power	Temperature	Cooling Type	Unit Size(mm)	Internal Size(mm)	Capacity	Refrigerant	Weight
TG1.5L2	220V/50HZ	0.305Kw	0~10°C	Static	1500×760×810	1020×580×560	332L	R134a/404	101kg
TG24L3	220V/50HZ	0.435Kw	0~10°C	Fan cooling	2400×760×810	1920×580×560	624L	R134a/404	142kg
KT2	220V/50HZ	0.478Kw	0~10°C	Fan cooling	1787×750×1085	1680×570×650	478L	R134a/404	146kg



WMG1



WMG



WMP



SCL4

Model	Voltage	Power	Temperature	Cooling Type	Unit Size(mm)	Internal Size(mm)	Capacity	Refrigerant	Weight
WMG1	220V/50HZ	0.49Kw	0~10°C	Fan cooling	1800×800×1300	1270×620×690	850L	R134a/404	196kg
WMG	220V/50HZ	0.32Kw	0~10°C	Fan cooling	900×698×900	800×538×420	188L	R134a/404	70kg
WMP	220V/50HZ	0.245Kw	0~10°C	Fan cooling	900×698×900	800×538×420	188L	R134a/404	70kg
SCL4	220V/50HZ	0.275Kw	0~10°C	Fan cooling	1500×800×1130	1400×620×600	520L	R134a/404	160kg

Electric Cooling Bain-Marie



TZL-1200



TZL-1500



TZL-1800

Model	Voltage	Power	Temperature	Dimension	Capacity	Net Weight
TZL-1200	110V /220V	180W	0~5°C	1200x315x400mm	1/4x65mmx4pcs	40kg
TZL-1500	110V /220V	210W	0~5°C	1500x315x400mm	1/4x65mmx6pcs	45kg
TZL-1800	110V /220V	260W	0~5°C	1800x315x400mm	1/4x65mmx8pcs	50kg

Cake Showcase



CL268FLC4 CL428FLC4 CL428FLX4 CL608FL2X4 CL848FL2X4 CL848FL2C4

Model	Voltage	Power	Temperature	Cooling Type	Unit Size(mm)	Packing Size(mm)	Refrigerant	Net Weight
CL268FLC4	220V/50HZ	0.4Kw	5~10°C	Fan cooling	540×540×1650	640×640×1800	R134a	95kg
CL428FLC4	220V/50HZ	0.53Kw	5~10°C	Fan cooling	640×640×1890	740×740×2050	R134a	125kg
CL428FLX4	220V/50HZ	0.53Kw	5~10°C	Fan cooling	640×640×1890	740×740×2050	R134a	125kg
CL608FL2X4	220V/50HZ	0.98Kw	5~10°C	Fan cooling	920×800×1890	1020×900×2050	R134a	140kg
CL848FL2X4	220V/50HZ	0.78Kw	5~10°C	Fan cooling	1220×6400×1890	1320×740×2050	R134a	155kg
CL848FL2C4	220V/50HZ	0.78Kw	5~10°C	Fan cooling	1220×6400×1890	1320×740×2050	R134a	155kg



Pastry display cabinet

ADN2-01

Unit Size:135×64×132cm
Packing Size:145×74×147cm
Voltage:220V/50HZ
Quantity of Pans:400×600 6PCS
Weight:150kg
Room temperature

ADN2-02

Unit Size:192×64×132cm
Packing Size:202×74×147cm
Voltage:220V/50HZ
Quantity of Pans:400×600 6PCS
Weight:380kg



CS328/428/528



Marble cake showcase
CSD328/428/528



Front door
HL2-1200/1500/1800



CS328FL/428FL/528FL



CS328/428/528F

Model	Voltage	Power	Temperature	Cooling Type	Unit Size(mm)	Packing Size(mm)	Refrigerant	Net Weight
CS328	220V/50HZ	0.7/0.78Kw	5~10°C	Fan cooling	1200×890×1090(1230)	1300×990×1230(1380)	R134a	280kg
CS428	220V/50HZ	0.82/0.9Kw	5~10°C	Fan cooling	1500×890×1090(1230)	1600×990×1230(1380)	R134a	325kg
CS528	220V/50HZ	0.91/0.99Kw	5~10°C	Fan cooling	1800×890×1090(1230)	1900×990×1230(1380)	R134a	380kg
CSD328	220V/50HZ	0.68Kw	5~10°C	Fan cooling	1200×695×1250	1300×780×1330	R134a	280kg
CSD428	220V/50HZ	0.8Kw	5~10°C	Fan cooling	1500×695×1250	1600×780×1330	R134a	325kg
CSD528	220V/50HZ	0.91Kw	5~10°C	Fan cooling	1800×695×1250	1900×780×1330	R134a	380kg
HL2-1200	220V/50HZ	0.78Kw	5~10°C	Fan cooling	1200×850×1650	1300×950×1800	R134a/404	160kg
HL2-1500	220V/50HZ	0.91Kw	5~10°C	Fan cooling	1500×850×1650	1600×950×1800	R134a/404	190kg
HL2-1800	220V/50HZ	1.21Kw	5~10°C	Fan cooling	1800×850×1650	1900×950×1800	R134a/404	220kg
CS328FL	220V/50HZ	0.7Kw	5~10°C	Fan cooling	1200×880×1180	1300×980×1330	R134a	290kg
CS428FL	220V/50HZ	0.82Kw	5~10°C	Fan cooling	1500×880×1180	1600×980×1330	R134a	345kg
CS528FL	220V/50HZ	1.05Kw	5~10°C	Fan cooling	1800×880×1180	1900×980×1330	R134a	400kg
CS328F	220V/50HZ	0.7Kw	5~10°C	Fan cooling	1200×780×1180	1300×880×1330	R134a	280kg
CS428F	220V/50HZ	0.82Kw	5~10°C	Fan cooling	1500×780×1180	1600×880×1330	R134a	325kg
CS528F	220V/50HZ	1.05Kw	5~10°C	Fan cooling	1800×780×1180	1900×880×1330	R134a	380kg

Fresh Meat & Drink Refrigerated Display



HG-25

Size:2500×900×1980mm
Cabinet temperature:2-10°C
Shelf(adjustable):4 level
Power:1860W
Voltage:220V 50HZ

HG-25F

Size:2500×1060×2100mm
Cabinet temperature:2-10°C
Shelf(adjustable):4 level
Power:2200W
Voltage:220V 50HZ

ZHG-25

Size:2500×1060×2000mm
Cabinet temperature:0-10°C/-18°C-22°C
Shelf(adjustable):2 level
Power:2200W
Voltage:220V 50HZ

SBG-25

Size:2500×1060×1600mm
Cabinet temperature:2-10°C
Shelf(adjustable):3 level
Power:1820W
Voltage:220V 50HZ



SG-25KP

Size:2500×1180×1280mm
Cabinet temperature:2-10°C
Power:1100W
Voltage:220V 50HZ



DG-25

Size:2500×1080×960mm
Cabinet temperature:-18°C--22°C
Power:2120W
Voltage:220V 50HZ



RG-20P

Size:2000×1180×900mm
Cabinet temperature:-2-8°C
Power:735W
Voltage:220V 50HZ



SG-25P

Size:2500×1180×1280mm
Cabinet temperature:2-10°C
Power:720W
Voltage:220V 50HZ

Beverage Display Showcase



LG238

Size:560×576×1835mm
Capacity:238L
Cabinet Temp:0~10°C
Power:195W
Voltage:220V/50HZ



LG338

Size:600×626×2035mm
Capacity:338L
Cabinet Temp:0~10°C
Power:235W
Voltage:220V/50HZ



LG1380

Size:1630×676×2145mm
Capacity:1380L
Cabinet Temp:0~10°C
Power:550W
Voltage:220V/50HZ



TG-90M1

Size:520×500×840mm
Capacity:90L
Cabinet Temp:2~10°C/-10~0°C
Power:78W
Voltage:220V/50HZ



TG-200M2

Size:900×540×930mm
Capacity:210L
Cabinet Temp:2~10°C/-10~0°C
Power:98W
Voltage:220V/50HZ



TG-300M3

Size:1350×540×930mm
Capacity:300L
Cabinet Temp:2~10°C/-10~0°C
Power:110W
Voltage:220V/50HZ

Slush Dispenser



MX-120

Power Supply:220V/50HZ
Capacity:12L
Power:550 W
Size:24×53×80cm
Packing size:28×45×85cm
Net Weight:25KG



MX-240

Power Supply:220V/50HZ
Capacity:12L x 2
Power:890 W
Size:43×53×80cm
Packing size:47×45×85cm
Net Weight: 50KG



MX-360

Power Supply:220V/50HZ
Capacity:12L x 3
Power:1100 W
Size:62×53×80cm
Packing size:67×45×85cm
Net Weight: 70KG

Luxury Slush Dispenser

- ▶ Removable and super strong bowl,virtually unbreakable polycarbonate.
- ▶ Automatically shuts down refrigeration(stop compressor)when product reaches desired thickness.
- ▶ R304 stainless steel body with elegant design.
- ▶ 15 liter super big capacity bowl to keep the large supply at short time.
- ▶ Unique double side evaporating cylinder.
- ▶ Magnetic drive reduce the energy loss.
- ▶ Food-grade high density polycarbonate bowl,healty and envrionmental protection.
- ▶ Bowl and faucet easy to disassemble for quick cleaning and utmost hygiene.



MPJ10-1

Voltage:220-240V/110-115V
Frequency:50/60HZ
Power:300W
Cold-beverage temperature:-2°C~-3°C
Size:290x560x760mm
G.W/N.W:29/40KG



MPJ10-2

Voltage:220-240V/110-115V
Frequency:50/60HZ
Power:400W
Cold-beverage temperature:-2°C~-3°C
Size:420x560x760mm
G.W/N.W:41/55KG



XRJ-15L-3

Voltage:220-240V/110-115V
Frequency:50/60HZ
Power:500W
Cold-beverage temperature:-2°C~-3°C
Size:600x560x760mm
G.W/N.W:58/74KG



MPJ10-1

Voltage:220-240V/110-115V
Frequency:50/60HZ
Power:300W
Cold-beverage temperature:-2°C~-3°C
Size:270x580x810mm
G.W/N.W:28/40KG



MPJ10-2

Voltage:220-240V/110-115V
Frequency:50/60HZ
Power:400W
Cold-beverage temperature:-2°C~-3°C
Size:470x580x790mm
G.W/N.W:44/59KG



MPJ10-3

Voltage:220-240V/110-115V
Frequency:50/60HZ
Power:500W
Cold-beverage temperature:-2°C~-3°C
Size:660x580x790mm
G.W/N.W:61/80KG

Juice Dispenser



MPL-118A



MPL-236A



MPL-354A



MPL-130A



MPL-130AJ

Model	Capacity	Voltage	Power	Dimension	Net Weight
MPL-118A	18L	220V/50HZ	300W	435×235×725mm	23kg
MPL-236A	36L	220V/50HZ	400W	385×445×780mm	33kg
MPL-354A	54L	220V/50HZ	610W	385×655×780mm	45kg
MPL-130A	30L	220V/50HZ	540W	780×420×480mm	28kg
MPL-130AJ	30L	220V/50HZ	540W	780×420×480mm	28kg



MJS-181



MJS-182



MJS-183

Model	Capacity	Voltage	Cooling Power	Heating Power	Dimension	Net Weight
MJS-181	18L	110V/220V	180W	600W	430×350×740mm	24KG
MJS-182	18Lx2	110V/220V	280W	600W	480×460×740mm	29KG
MJS-183	18Lx3	110V/220V	380W	1500W	700×430×740mm	37KG



MLJ10-1



MLJ10-2



MLJ10-3



MLJ10-4

Model	Capacity	Voltage	Cooling Power	Heating Power	Dimension	Net Weight
MLJ10-1	10L	110V/220V	180W	360W	210×450×670mm	13KG
MLJ10-2	10Lx2	110V/220V	280W	800W	330×450×670mm	22KG
MLJ10-3	10Lx3	110V/220V	320W	1000W	410×450×670mm	27KG
MLJ10-4	10Lx4	110V/220V	380W	1200W	540×450×670mm	33KG

Ice Maker

Ice Chip Machine



FD-20 ❄️
 Voltage:110V/220V
 Frequency:50HZ/60HZ
 Power:290W
 Dimension:420x520x750mm
 Daily Production:20Kg/24H
 Ice Storage:6Kg
 Cabinet Temperature:0~-18℃
 Refrigerant:R134a/R404
 Weight:30kg

FD-40 ❄️
 Voltage:110V/220V
 Frequency:50HZ/60HZ
 Power:390W
 Dimension:510x570x800mm
 Daily Production:40Kg/24H
 Ice Storage:12Kg
 Cabinet Temperature:0~-18℃
 Refrigerant:R134a/R404
 Weight:35kg

FD-60 ❄️
 Voltage:110V/220V
 Frequency:50HZ/60HZ
 Power:425W
 Dimension:590x620x990mm
 Daily Production:60Kg/24H
 Ice Storage:23Kg
 Cabinet Temperature:0~-18℃
 Refrigerant:R134a/R404
 Weight:55kg



BF-210/BF-380 ❄️

BF-210 ❄️
 Voltage:110V/220V
 Frequency:50HZ/60HZ
 Power:480W
 Dimension:590x620x990mm
 Daily Production:96Kg/24H
 Ice Storage:24Kg
 Cabinet Temperature:0~-18℃
 Refrigerant:R134a/R404
 Weight:62kg

BF-380 ❄️
 Voltage:110V/220V
 Frequency:50HZ/60HZ
 Power:900W
 Dimension:690x620x990mm
 Daily Production:172Kg/24H
 Ice Storage:34Kg
 Cabinet Temperature:0~-18℃
 Refrigerant:R134a/R404
 Weight:90kg



FD-90 ❄️
 Voltage:110V/220V
 Frequency:50HZ/60HZ
 Power:790W
 Dimension:690x220x990mm
 Daily Production:90Kg/24H
 Ice Storage:33Kg
 Cabinet Temperature:0~-18℃
 Refrigerant:R134a/R404
 Weight:70kg

FD-120 ❄️
 Voltage:110V/220V
 Frequency:50HZ/60HZ
 Power:790W
 Dimension:770x840x1420mm
 Daily Production:120Kg/24H
 Ice Storage:125Kg
 Cabinet Temperature:0~-18℃
 Refrigerant:R134a/R404
 Weight:110kg

FD-150 ❄️
 Voltage:110V/220V
 Frequency:50HZ/60HZ
 Power:980W
 Dimension:770x840x1420mm
 Daily Production:150Kg/24H
 Ice Storage:125Kg
 Cabinet Temperature:0~-18℃
 Refrigerant:R134a/R404
 Weight:125kg

Ice Crusher



FD-200 ❄️
 Voltage:110V/220V
 Frequency:50HZ/60HZ
 Power:980W
 Dimension:770x840x1720mm
 Daily Production:200Kg/24H
 Ice Storage:125Kg
 Cabinet Temperature:0~-18℃
 Refrigerant:R134a/R404
 Weight:125kg

FD-300 ❄️
 Voltage:110V/220V
 Frequency:50HZ/60HZ
 Power:1100W
 Dimension:770x840x1720mm
 Daily Production:300Kg/24H
 Ice Storage:125Kg
 Cabinet Temperature:0~-18℃
 Refrigerant:R134a/R404
 Weight:125kg

FD-350 ❄️
 Voltage:110V/220V
 Frequency:50HZ/60HZ
 Power:1200W
 Dimension:770x840x1720mm
 Daily Production:350Kg/24H
 Ice Storage:125Kg
 Cabinet Temperature:0~-18℃
 Refrigerant:R134a/R404
 Weight:130kg



MZY-108

Ice Crusher
 Voltage:110V 60HZ/220V 50HZ
 Power:300W
 Motor Speed:2000r/min
 Output:60KGS/H
 Gross Weight:6KGS
 Size:425x205x320mm



MZY-100

Ice Crusher
 Voltage:110V 60HZ/220V 50HZ
 Power:180W
 Motor Speed:1400r/min
 Output:100KGS/H
 Gross Weight:8KGS
 Size:425x275x345mm



MZY-114

Fully Stainless Steel Ice Crusher
 Voltage:110V 60HZ/220V 50HZ
 Power:200W
 Motor Speed:1400r/min
 Output:180KGS/H
 Gross Weight:8KGS
 Size:410x240x430mm



MZY-130

Snow Cone Machine
 Voltage:110V 60HZ/220V 50HZ
 Power:180W
 Motor Speed:1400r/min
 Output:180KGS/H
 Gross Weight:16KGS
 Size:520x410x660mm



FD-400 ❄️
 Voltage:220~240V
 Frequency:50/60HZ
 Power:1.4Kw
 Dimension:750x880x1420mm
 Ice Shape:Cube
 Cube Ice Size:23x23x23mm
 Daily Production:400kg/24h
 Ice Grid Quantity:380
 Ice Storage Capacity:250kg
 Refrigerant:R404a
 Refrigerant Consumption:700g
 Cooling Way:Air/Water
 Compressor:Copeland

FD-500 ❄️
 Voltage:220~240V
 Frequency:50/60HZ
 Power:1.55Kw
 Water Cooler Dimension:750x870x1475mm
 Air Cooler Dimension:854x950x1475mm
 Ice Shape:Cube
 Cube Ice Size:23x23x23mm
 Daily Production:500kg/24h
 Ice Grid Quantity:399
 Ice Storage Capacity:250kg
 Refrigerant:R404a
 Refrigerant Consumption:900g
 Cooling Way:Air/Water
 Compressor:Copeland

FD-700 ❄️
 Voltage:3N~380V
 Frequency:50/60HZ
 Power:2.3Kw
 Water Cooler Dimension:1300x890x1580mm
 Air Cooler Dimension:1340x950x1500mm
 Ice Shape:Cube
 Cube Ice Size:23x23x23mm
 Daily Production:700kg/24h
 Ice Grid Quantity:646
 Ice Storage Capacity:350kg
 Refrigerant:R404a
 Refrigerant Consumption:1400g
 Cooling Way:Air/Water
 Compressor:Copeland



MIS-269

Ice Machine
 Voltage:220V 50HZ
 Power:300W
 Rotation Speed:320R/M
 Ice Storage Capacity:5KGS
 Juicing Capacity:200KGS/H
 Dimension:286x379x542mm
 Packing Size:450x334x590mm



MIS-568

Ice Machine
 Voltage:220V 50HZ
 Power:350W
 Rotation Speed:350R/M
 Ice Storage Capacity:8KGS
 Juicing Capacity:300KGS/H
 Packing Size:430x430x705mm



MIS-118

Ice Machine
 Voltage:220V 50HZ
 Power:350W
 Rotation Speed:250-300R/M
 Ice Crushing Capacity:90KGS/H
 Packing Size:420x320x860mm



MIS-300HD

Ice Machine
 Voltage:220V 50HZ
 Power:300W
 Rotation Speed:1450R/M
 Ice Crushing Capacity:180KGS/H
 Packing Size:430x225x425mm

Soft Ice Cream Machine



MBQL-818A

Voltage:110V/220V
Power:1.8KW
Size:540x600x1370mm
Rated Output:18L/H
Weight:120kg

MBQL-825A

Voltage:110V/220V
Power:2.0KW
Size:540x600x1410mm
Rated Output:25L/H
Weight:140kg

MBQL-832A

Voltage:110V/220V
Power:2.0KW
Size:540x600x1410mm
Rated Output:25L/H
Weight:140kg

- ▶ Adjustable foot and easy to install; high efficiency and energy saving.
- ▶ Hot selling model in chinese ice cream machine industrial.
- ▶ Very reliable and long service time.
- ▶ Your best asset to launch your own soft ice cream & frozen yogurt business.
- ▶ User-friendly digital panel, professional control system.
- ▶ Freezing cylinder prevent and protection.
- ▶ Auto-operation, auto-ice creaming and auto-cleaning.
- ▶ Single-cooling system; keep mix in hopper fresh at 2-7 degree all the time.



BQL-108



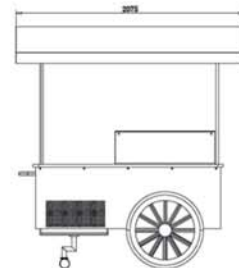
BQL-208



BQL-308

Model	Capacity	Voltage	Power	Refrigerant	Dimension	Net Weight
BQL-108	20L/h	110V/220V	1600W	R404a	505x700x810mm	100KG
BQL-208	26L/h	110V/220V	1900W	R404a	505x700x1280mm	110KG
BQL-308	36L/h	110V/220V	1900W	R404a	540x750x1380mm	120KG

Ice Cream Cart



MIC-10

Power supply: 110V/220V
Dimension: 207.5*101*218cm
Capacity: 303L
Interior Temp. -22~-22 centigrade
Refrigerant: R404A
Defrost Method: Heating element
Max Defrost time: 15min
Compressor Brand: Aspera
Inputting Power: 678W
Operating Power: 870W
Net Weight:200kg

Luxury Soft Ice Cream Machine



MSF-225A/MSF-225B



MSF-240A/MSF-240B



MSF-338A/MSF-338B



Beater



A Series



B Series



Double Compressors



Air Pump

Model	Capacity	Voltage	Power	Freezing Cylinder	Mix Hopper	Refrigerant	Dimension	Net Weight
MSF-225A	25L/h	110V/220V/380V	2500W	1.7Lx2	13Lx2	R404a	550x650x960mm	150KG
MSF-225B	25L/h	110V/220V/380V	2500W	1.7Lx2	13Lx2	R404a	550x650x960mm	160KG
MSF-240A	40L/h	110V/220V/380V	2700W	1.7Lx2	13Lx2	R404a	550x650x960mm	160KG
MSF-240B	40L/h	110V/220V/380V	2700W	1.7Lx2	13Lx2	R404a	550x650x960mm	170KG
MSF-338A	38L/h	110V/220V/380V	2500W	3.2L	15L	R404a	560x720x1500mm	130KG
MSF-338B	38L/h	110V/220V/380V	2500W	3.2L	15L	R404a	560x720x1500mm	135KG

Hard Ice Cream Machine



MKS-80/120/180/300



MKS-80W/120W/180W/300W

Model	Voltage(V)	Power(Kw)	Outlook Dimension(cm)	Capacity(L)	Output(L/H)	Brand of Compressor
MKS-80	380	3.3	49x66x82	5	20-25	French Tecumseh
MKS-120	380	4.3	53x105x122	8	32-40	French Tecumseh
MKS-180	380	5.2	55x90x120	12	48-60	French Tecumseh
MKS-300	380	7.5	57x90x120	18	75-90	French Tecumseh
MKS-80W	380	3.3	45x60x82	5	20-25	French Tecumseh
MKS-120W	380	4.3	55x95x120	8	32-40	French Tecumseh
MKS-180W	380	5.2	61x108x126	12	48-60	French Tecumseh
MKS-300W	380	7.5	66x108x130	18	75-90	French Tecumseh

Work Bench Series

Wholly made of stainless steel material, anti-eroding, foam inside, cleaning and Healthful, reasonable structure, firm and durable, stylish and fashion, top-layer bearing weight 300KG, disassembly design, transit facility, suit to used in locations of hotel, super market, kitchen, warehouse, etc.



MWTC-121



MWTC-162



MWTC-121B



MWTC-162B

S.S ROUND TUBE WORKTABLE

Name	Model	Dimension(mm)	Name	Model	Dimension(mm)
S.S Round Tube 1-tier Working Table without backsplash	MWTC-081	800×700×850	S.S Round Tube 2-tier Working Table without backsplash	MWTC-082	800×700×850
	MWTC-101	1000×700×850		MWTC-102	1000×700×850
	MWTC-121	1200×700×850		MWTC-122	1200×700×850
	MWTC-141	1400×700×850		MWTC-142	1400×700×850
	MWTC-161	1600×700×850		MWTC-162	1600×700×850
	MWTC-181	1800×700×850		MWTC-182	1800×700×850
	MWTC-201	2000×700×850		MWTC-202	2000×700×850
	MWTC-221	2200×700×850		MWTC-222	2200×700×850
S.S Round Tube 1-tier Working Table with backsplash	MWTC-081B	800×700×950	S.S Round Tube 2-tier Working Table with backsplash	MWTC-082B	800×700×950
	MWTC-101B	1000×700×950		MWTC-102B	1000×700×950
	MWTC-121B	1200×700×950		MWTC-122B	1200×700×950
	MWTC-141B	1400×700×950		MWTC-142B	1400×700×950
	MWTC-161B	1600×700×950		MWTC-162B	1600×700×950
	MWTC-181B	1800×700×950		MWTC-182B	1800×700×950
	MWTC-201B	2000×700×950		MWTC-202B	2000×700×950
	MWTC-221B	2200×700×950		MWTC-222B	2200×700×950

S.S SQUARE TUBE WORKTABLE



MWTC-122B



MWTC-161B

Name	Model	Dimension(mm)
S.S Square Tube 2-tier Working Table without backsplash	MWTC-082	800×700×850
	MWTC-102	1000×700×850
	MWTC-122	1200×700×850
	MWTC-142	1400×700×850
	MWTC-162	1600×700×850
	MWTC-182	1800×700×850
	MWTC-202	2000×700×850
S.S Square Tube 2-tier Working Table with backsplash	MWTC-222	2200×700×850
	MWTC-082B	800×700×950
	MWTC-102B	1000×700×950
	MWTC-122B	1200×700×950
	MWTC-142B	1400×700×950
	MWTC-162B	1600×700×950
MWTC-182B	1800×700×950	
MWTC-202B	2000×700×950	
MWTC-222B	2200×700×950	

Wire Shelving

- ▶ Each tier bearing weight 150-250KG; each layer height freely adjusted.
- ▶ Disassembly design, transit facility; suit to used in locations of super market, refrigerated house, kitchen, warehouse, display hall, etc.
- ▶ Optional Items: paint coating.
- ▶ Electroplating coating.
- ▶ Stainless steel material



Chrome Plated/Stainless Steel Wire Shelving



Epoxy Wire Shelving

WIRE SHELVING

Name	Size(mm)	Size(mm)
Wire Shelving (Four Tiers)	610×355×1600	610×355×1800
	910×355×1600	910×355×1800
	1060×355×1600	1060×355×1800
	1220×355×1600	1220×355×1800
	1525×355×1600	1525×355×1800
	1825×355×1600	1825×355×1800
	610×455×1600	610×455×1800
	910×455×1600	910×455×1800
	1060×455×1600	1060×455×1800
	1220×455×1600	1220×455×1800
	1525×455×1600	1525×455×1800
	1825×455×1600	1825×455×1800
	610×530×1600	610×530×1800
	910×530×1600	910×530×1800
	1060×530×1600	1060×530×1800
	1220×530×1600	1220×530×1800
	1525×530×1600	1525×530×1800
	1825×530×1600	1825×530×1800
	610×610×1600	610×610×1800
	910×610×1600	910×610×1800
1060×610×1600	1060×610×1800	
1220×610×1600	1220×610×1800	
1525×610×1600	1525×610×1800	
1825×610×1600	1825×610×1800	

Shelf Series



4 Tier shelf

HS-411S
Dimension: 1100 × 500 × 1800mm

HS-412S
Dimension: 1200 × 500 × 1800mm

HS-415S
Dimension: 1500 × 500 × 1800mm

HS-418S
Dimension: 1800 × 500 × 1800mm



4 Tier shelf

HS-411B
Dimension: 1100 × 500 × 1550mm

HS-412B
Dimension: 1200 × 500 × 1550mm

HS-415B
Dimension: 1500 × 500 × 1550mm

HS-418B
Dimension: 1800 × 500 × 1550mm



5 Tier shelf

HS-511S
Dimension: 1100 × 500 × 1800mm

HS-512S
Dimension: 1200 × 500 × 1800mm

HS-515S
Dimension: 1500 × 500 × 1800mm

HS-518S
Dimension: 1800 × 500 × 1800mm

S.S Working Table

- ▶ ST:sink table
- ▶ C:round table D:square table
- ▶ 01:1-shelf 02:2-shelf
- ▶ L2:length 1200mm, 7:depth 700mm
- ▶ M2:2 sinks in the central, R2:2 sinks on the right, L2:2 sink on the left
- ▶ 300:depth of the sink 300mm, 250:depth of the sink 250mm



STC02-147L1-300 STC02-147L1-250 STC02-147M2-300 STC02-147M2-250 STC02-187L2-300 STC02-187L2-250 STC01-187L2-300 STC01-187L2-250

S.S ROUND TUBE 2-SHELF SINK

Model	Item	Dimension(mm)	Note(mm)
STC02-007-300		700×700×850	1 Sink 500×500×300
STC02-007-250		700×700×850	1 Sink 500×500×250
STC02-127R1-300		1200×700×850	1 Sink Right 500×500×300
STC02-127R1-250		1200×700×850	1 Sink Right 500×500×250
STC02-127L1-300		1200×700×850	1 Sink Left 500×500×300
STC02-127L1-250		1200×700×850	1 Sink Left 500×500×250
STC02-127M2-300		1200×700×850	2 Sinks 500×500×300
STC02-127M2-250		1200×700×850	2 Sinks 500×500×250
STC02-147R1-300		1400×700×850	1 Sink Right 500×500×300
STC02-147R1-250		1400×700×850	1 Sink Right 500×500×250
STC02-147L1-300		1400×700×850	1 Sink Left 500×500×300
STC02-147L1-250		1400×700×850	1 Sink Left 500×500×250
STC02-147M2-300		1400×700×850	2 Sinks 500×500×300
STC02-147M2-250		1400×700×850	2 Sinks 500×500×250
STC02-167R2-300		1600×700×850	2 Sinks Right 500×500×300
STC02-167R2-250		1600×700×850	2 Sinks Right 500×500×250
STC02-167L2-300		1600×700×850	2 Sinks Left 500×500×300
STC02-167L2-250		1600×700×850	2 Sinks Left 500×500×250
STC02-187R2-300		1800×700×850	2 Sinks Right 500×500×300
STC02-187R2-250		1800×700×850	2 Sinks Right 500×500×250
STC02-187L2-300		1800×700×850	2 Sinks Left 500×500×300
STC02-187L2-250		1800×700×850	2 Sinks Left 500×500×250
STC02-187M3-300		1800×700×850	3 Sinks 500×500×300
STC02-187M3-250		1800×700×850	3 Sinks 500×500×250
STC02-207M2-300		2000×700×850	2 Sinks Central 500×500×300
STC02-207M2-250		2000×700×850	2 Sinks Central 500×500×250
STC02-207L3-300		2000×700×850	3 Sinks Left 500×500×300
STC02-207L3-250		2000×700×850	3 Sinks Left 500×500×250

S.S Working Table

S.S ROUND TUBE 1-SHELF SINK

Model	Item	Dimension(mm)	Note(mm)
STC01-007-300		700×700×850	1 Sink 500×500×300
STC01-007-250		700×700×850	1 Sink 500×500×250
STC01-127R1-300		1200×700×850	1 Sink Right 500×500×300
STC01-127R1-250		1200×700×850	1 Sink Right 500×500×250
STC01-127L1-300		1200×700×850	1 Sink Left 500×500×300
STC01-127L1-250		1200×700×850	1 Sink Left 500×500×250
STC01-127M2-300		1200×700×850	2 Sinks 500×500×300
STC01-127M2-250		1200×700×850	2 Sinks 500×500×250
STC01-147L1-300		1400×700×850	1 Sink Left 500×500×300
STC01-147L1-250		1400×700×850	1 Sink Left 500×500×250
STC01-147M2-300		1400×700×850	2 Sinks 500×500×300
STC01-147M2-250		1400×700×850	2 Sinks 500×500×250
STC01-167L2-300		1600×700×850	2 Sinks Left 500×500×300
STC01-167L2-250		1600×700×850	2 Sinks Left 500×500×250
STC01-187L2-300		1800×700×850	2 Sinks Left 500×500×300
STC01-187L2-250		1800×700×850	2 Sinks Left 500×500×250
STC01-187M3-300		1800×700×850	3 Sinks 500×500×300
STC01-187M3-250		1800×700×850	3 Sinks 500×500×250
STC01-207M2-300		2000×700×850	2 Sinks Central 500×500×300
STC01-207M2-250		2000×700×850	2 Sinks Central 500×500×250
STC01-207L3-300		2000×700×850	3 Sinks Left 500×500×300
STC01-207L3-250		2000×700×850	3 Sinks Left 500×500×250



STC01-077-300
STC01-077-250



STC01-147M2-300
STC01-147M2-250

S.S ROUND TUBE 2-SHELF SINK WORKTABLE

Model	Item	Dimension(mm)	Note(mm)
STD02-077-300		700×700×850	1 Sink 500×500×300
STD02-077-250		700×700×850	1 Sink 500×500×250
STD02-127R1-300		1200×700×850	1 Sink Right 500×500×300
STD02-127R1-250		1200×700×850	1 Sink Right 500×500×250
STD02-127L1-300		1200×700×850	1 Sink Left 500×500×300
STD02-127L1-250		1200×700×850	1 Sink Left 500×500×250
STD02-127M2-300		1200×700×850	2 Sinks 500×500×300
STD02-127M2-250		1200×700×850	2 Sinks 500×500×250
STD02-147L1-300		1400×700×850	1 Sink Left 500×500×300
STD02-147L1-250		1400×700×850	1 Sink Left 500×500×250
STD02-147M2-300		1400×700×850	2 Sinks 500×500×300
STD02-147M2-250		1400×700×850	2 Sinks 500×500×250
STD02-167L2-300		1600×700×850	2 Sinks Left 500×500×300
STD02-167L2-250		1600×700×850	2 Sinks Left 500×500×250
STD02-187L2-300		1800×700×850	2 Sinks Left 500×500×300
STD02-187L2-250		1800×700×850	2 Sinks Left 500×500×250
STD02-187M3-300		1800×700×850	3 Sinks 500×500×300
STD02-187M3-250		1800×700×850	3 Sinks 500×500×250
STD02-207M2-300		2000×700×850	2 Sinks Central 500×500×300
STD02-207M2-250		2000×700×850	2 Sinks Central 500×500×250
STD02-207L3-300		2000×700×850	3 Sinks Left 500×500×300
STD02-207L3-250		2000×700×850	3 Sinks Left 500×500×250



STD02-127L1-300
STD02-127L1-250



STD02-187L2-300
STD02-187L2-250

Luxury Stainless Steel Cart



2 Layers Dining Cart
PRD-L2
 Dimension:950×500×950mm
PRD-M2
 Dimension:850×450×900mm
PRD-S2
 Dimension:750×400×835mm



3 Layers Dining Cart
PRD-L3
 Dimension:950×500×950mm
PRD-M3
 Dimension:850×450×900mm
PRD-S3
 Dimension:750×400×835mm



3 Layers Hot Pot Cart
NHP-L3
 Dimension:660×335×750mm
NHP-M3
 Dimension:585×335×750mm



Stainless Steel Collecting Cart
BRD-L2
 Dimension:950×500×950mm
BRD-M2
 Dimension:850×450×900mm
BRD-S2
 Dimension:750×400×835mm



(Folding)Stainless Steel Flat Cart
FT-B
 Dimension:820×520×970mm



Stainless Steel Flat Cart
FT-A
 Dimension:900×550×870mm
FT-D
 Dimension:1000×600×870mm



Platform Truck(Black/Blue)
YK-ST046
 Dimension:1000×600×980mm
YK-ST047
 Dimension:700×450×830mm



Stainless Steel Singel-Line Tray Trolley with table
TR-6DT
 Dimension:595×665×1150mm



Utility Cart
MYK-ST048
 Dimension:1020×500×960mm
MYK-ST049
 Dimension:810×435×910



Utility Cart
MYK-ST050
 Dimension:102×500×960mm
MYK-ST051
 Dimension:810×435×910mm



Stainless Steel Collecting Cart
MRTC-5A
 Dimension:900×460×950mm



(Fixed)Stainless Steel Dish Collecting Cart
RTD-5B
 Dimension:770×435×900mm

Luxury Soup Kettle

► Performance, fast heating, good warm-keeping effect



SK-13A
 Voltage:110V/220V
 Power:0.4Kw
 Capacity:13L
 Dimension:380x380x410mm



SK-13AS
 Voltage:110V/220V
 Power:0.4Kw
 Capacity:13L
 Dimension:380x380x410mm

S.S GN PAN



- Full size 1/1 to 1/9
- Stainless steel body, luxury appearance
- Internation stylish and fashion design

Model	Thickness(mm)	Dimensions(mm)
1/1×1"	0.6	530×327×20
1/1×1.5"	0.6	530×327×40
1/1×2.5"	0.6	530×327×65
1/1×4"	0.7	530×327×100
1/1×6"	0.7	530×327×150
1/1×8"	0.7	530×327×200
1/1(Cover)	0.7	530×327
1/2×1"	0.6	327×265×20
1/2×1.5"	0.6	327×265×40
1/2×2.5"	0.6	327×265×65
1/2×4"	0.7	327×265×100
1/2×6"	0.7	327×265×150
1/2×8"	0.7	327×265×200
1/2(Cover)	0.7	327×265
1/3×1"	0.6	327×176×20
1/3×1.5"	0.6	327×176×40

Model	Thickness(mm)	Dimensions(mm)
1/3×2.5"	0.6	327×176×65
1/3×4"	0.7	327×176×100
1/3×6"	0.7	327×176×150
1/3(Cover)	0.7	327×176
1/4×2.5"	0.6	265×164×65
1/4×4"	0.7	265×164×100
1/4×6"	0.7	265×164×150
1/4(Cover)	0.7	265×164
1/6×2.5"	0.6	176×164×65
1/6×4"	0.7	176×164×100
1/6×6"	0.7	176×164×150
1/6(Cover)	0.7	176×164
1/9×2.5"	0.6	176×109×65
1/9×4"	0.7	176×109×100
1/9×6"	0.7	176×109×150
1/9(Cover)	0.7	176×109

Storage Cabinet Series



Bench cabinet with sliding doors&splashback
HWC-6-12B
 Dimension:1200×600×850+100mm
HWC-6-15B
 Dimension:1500×600×850+100mm
HWC-7-12B
 Dimension:1200×700×850+100mm
HWC-8-12B
 Dimension:1200×800×850+100mm



Bench cabinet with sliding doors
HWC-7-12
 Dimension:1200×700×850mm
HWC-7-15
 Dimension:1500×700×850mm
HWC-8-12
 Dimension:1200×800×850mm
HWC-8-15
 Dimension:1500×800×850mm



Upright storage cabinet with sliding doors
HUC-5-10/B
 Dimension:1000×500×1800mm
HUC-5-12/B
 Dimension:1200×600×1800mm

Soup Kettle

► Performance, fast heating, good warm-keeping effect



SK-13
 Voltage: 220-240V
 Power:0.6Kw
 Capacity:13L

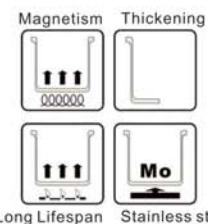


SK-10S
 Voltage: 220-240V
 Power:0.4Kw
 Capacity:10L



SK-10
 Voltage: 220-240V
 Power:0.4Kw
 Capacity:10L

S.S GN POT

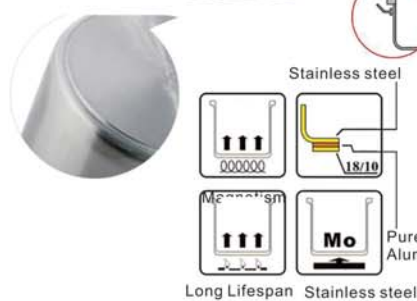


S.S Pot

Size (mm)	Material	Thickness (mm)
300x300	S.S201	1.0/1.2
350x350	S.S201	
400x400	S.S201	
450x450	S.S201	
500x500	S.S201	
550x550	S.S201	
600x600	S.S201	
300x200	S.S201	
350x220	S.S201	
400x240	S.S201	
450x260	S.S201	
500x280	S.S201	
600x300	S.S201	

S.S Pot (Composite Bottom)

Size (mm)	Material	Thickness (mm)	Bottom Thickness (mm)
200x200	S.S201	1	4.5
250x250	S.S201	1	4.5
280x280	S.S201	1	4.5
300x300	S.S201	1	4.5
320x320	S.S201	1	4.5
350x350	S.S201	1	4.5
360x360	S.S201	1	4.5
400x400	S.S201	1	4.5
450x450	S.S201	1.2	5.5
500x500	S.S201	1.2	5.5
550x550	S.S201	1.2	5.5
600x600	S.S201	1.2	5.5
300x200	S.S201	1	4.5
320x220	S.S201	1	4.5
350x240	S.S201	1	4.5
400x260	S.S201	1	4.5
450x260	S.S201	1.2	5.5
450x280	S.S201	1.2	5.5
500x300	S.S201	1.2	5.5
600x400	S.S201	1.2	5.5



Stainless Steel Cart



MR-16H
Dimension:470x620x1735mm
Packing Size:1680x660x110mm
Remarks:16 pans



MR-32H
Dimension:920x620x1735mm
Packing Size:1650x670x180mm
Remarks:32 pans

Luxury Chafing Dish



MJQ-433
Oblong Chafing Dish W/Lift-Up Lip And Stainless Steel Legs
Capacity:9.0L
Spec:60x35x32cm



MJQ-533
Oblong Chafing Dish W/Lift-Up Lip And Stainless Steel Legs
Capacity:9.0L
Spec:58x35.5x31.5cm



MJQ-633
Oblong Chafing Dish W/Lift-Up Lip And Stainless Steel Legs
Capacity:9.0L
Spec:60x35x32cm



MJQ-833
Oblong Chafing Dish W/Lift-Up Lip And Stainless Steel Legs
Capacity:9.0L
Spec:64x35x32cm



MJQ-1011
Full size hydraulic induction chafing (With Glass Lid)
Capacity:9.0L
Spec:58.5x45.5x33.5cm



MJQ-1032
2/3 size hydraulic induction chafing (With Glass Lid)
Capacity:5.5L
Spec:46.5x41x34cm



MJQ-1060
Round hydraulic induction chafing (With Glass Lid)
Capacity:6.0L
Spec:52x45.5x34.5cm



MJQ-1021
Half size hydraulic induction chafing (With Glass Lid)
Capacity:4.0L
Spec:45.5x32x34cm



MJQ-1011L
11L S/S hydraulic Soup Station (With Glass Lid)
Capacity:11L
Spec:49.5x47x44cm



MJQ-728
Round Roll Top Chafing Dish W/Show Window
Capacity:6L
Spec:47x51x45cm
Remark:350mm pan



MJQ-725
Oblong Roll Top Chafing Dish W/Show Window
Capacity:9L
Spec:64x50x44cm
Remark:1/1pan or 1/2pan



MJQ-723
Oblong Roll Top Chafing Dish
Capacity:9L
Spec:62x36x32cm
Remark:1/1pan or 1/2pan

Snack&Drink Vending Machine



VCM-3000A

Dimensions:1830×830×762mm
 Weight:285Kg
 Standards Capacities:30Selections
 Cans&Bottles:108items
 Snacks:144items
 Total:252items
 QTY:20'GP 14Sets/40'GP 28Sets



VCM-4000A

Dimensions:1830×830×895mm
 Weight:315Kg
 Standards Capacities:40Selections
 Cans&Bottles:144items
 Snacks:192items
 Total:336items
 QTY:20'GP 12Sets/40'GP 26Sets



VCM-5000A

Dimensions:1830×830×1056mm
 Weight:338Kg
 Standards Capacities:50Selections
 Cans&Bottles:180items
 Snacks:240items
 Total:420items
 QTY:20'GP 12Sets/40'GP 26Sets

Coffee Vending Machine(with coffee grinder)

MHV-101E

Drink Selections:Espresso,Americano with sugar,
 Americano withoutsugar,Macchiato,Cappuccino,
 Caffe Latte,Mochaccino,Chocolate,Choco milk,Hot
 milk, Sweet milk,Milk coffee
 Power:110/220V/50HZ.
 Net Weight:25kg.
 Machine Dimensions:660×360×450mm.
 Bean Storage Capacity:1000g.
 Volume of Canister:1500ml.
 Volume of Water tank:2600ml.
 Volume of Heater:1000ml.
 Power of Heater:800W.
 Power of Boiler:1400W.
 Cup dispenser:Equipped with maximum of 70 cups
 Coin mechanism:Optional



Inside



Small Box Vending Machine



M-AK304

Specifications:
 Adaptable for any coin within 28mm
 diameter by 3mm thickness, and allows
 max 8 coins per transaction, and coins
 can be customized for your needs.
 Capacity:4 Columns and normally 18
 pcs per column,72~80 Tissue Packets
 Machine
 Vending Size:Packets Within 76mm(L) x
 55mm(W) x20~30mm(H)
 Applicability:Any Packed Products,
 such as Medicine,Condom, Tissue &
 Sanitary Paper.
 Machine Size:720x210x380mm
 Packing Size:780x250x430mm
 Net Weight:20.5kg



M-AK344

Specifications:
 Adaptable for any coins within 28mm
 diameter by 3mm thickness, and allows
 max 4 coins per transaction.
 Selection & Capacity: 4 Spiral Columns &
 normally 32 pcs per column, and coils can
 be customized for your needs.
 Applicability: Any small items packed
 inside flat packing, such as Non-
 Prescription Medicine, Foiled Condom,
 Wet Tissue & Sanitary Pad.
 Machine Size:555x110x585mm
 Packing Size:635x190x665mm
 Net Weight: 19Kg